



Oracle & Mobile What Strategy is right for you?



**Alex Ladd
Sr. Partner
MindStream Analytics**

Webinar will start at 12:05pm

Agenda

- **Introduction**
- **Audience Participation**
- **Oracle's Mobile Strategy**
 - What exists today - Consumption
 - Where Oracle is going – Take Action
- **Complements to Oracle's strategy**
- **Demo**
- **Questions**



Alex Ladd

- 15 Years of EPM Consulting Experience
- OAUG Hyperion SIG Essbase Domain Lead
- Senior Partner – MindStream Analytics

Contact Information

Email: aladd@mindstreamanalytics.com

Telephone: 917-579-0926

Audience Participation

- How many people currently support mobile analytics?
- How many desire to implement Hyperion on mobile platforms?
- How many would like to implement Business Intelligence on mobile platforms?
- Which mobile platforms does/would your company support?
 - iOS, Android, Blackberry or Other

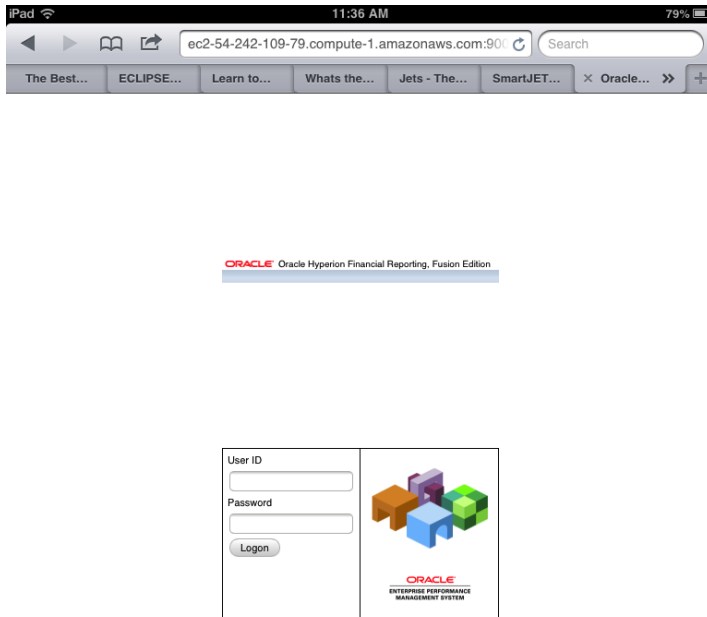
EPM Mobile Strategy

- **Available Today:** Focus on Information Consumption
 1. Financial Reporting mobile browser support – EPM and Fusion
 2. BI Apps for EPM (e.g. OFMA, OFPA) using current and future OBI Mobile products



Financial Reports Mobile Access

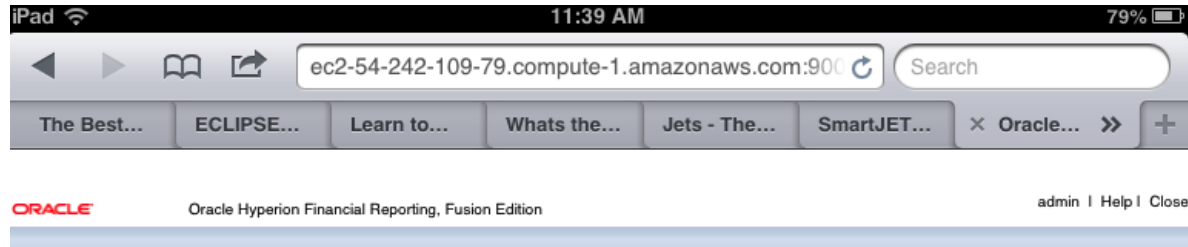
Already Exists



- **Already Exists**
- **Use Existing Reports on Mobile Platforms**
- **iOS and Android Supported**
- **Best to have Mobile Optimized Reports**

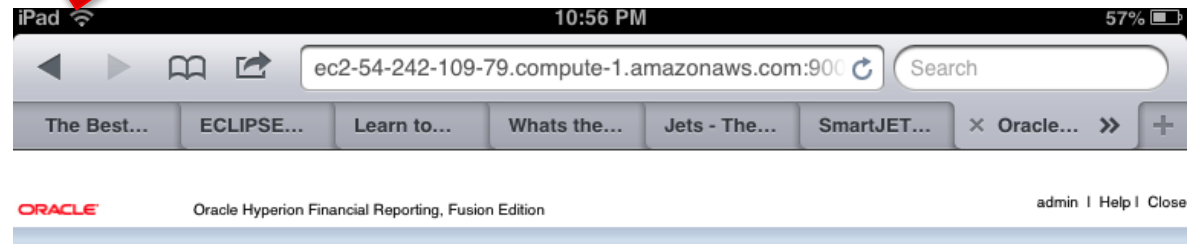
<http://yourserver:port/hr/mobile/HRMobileLogon.jsp>

The Mobile “Explore”



Please select a report or book from left.

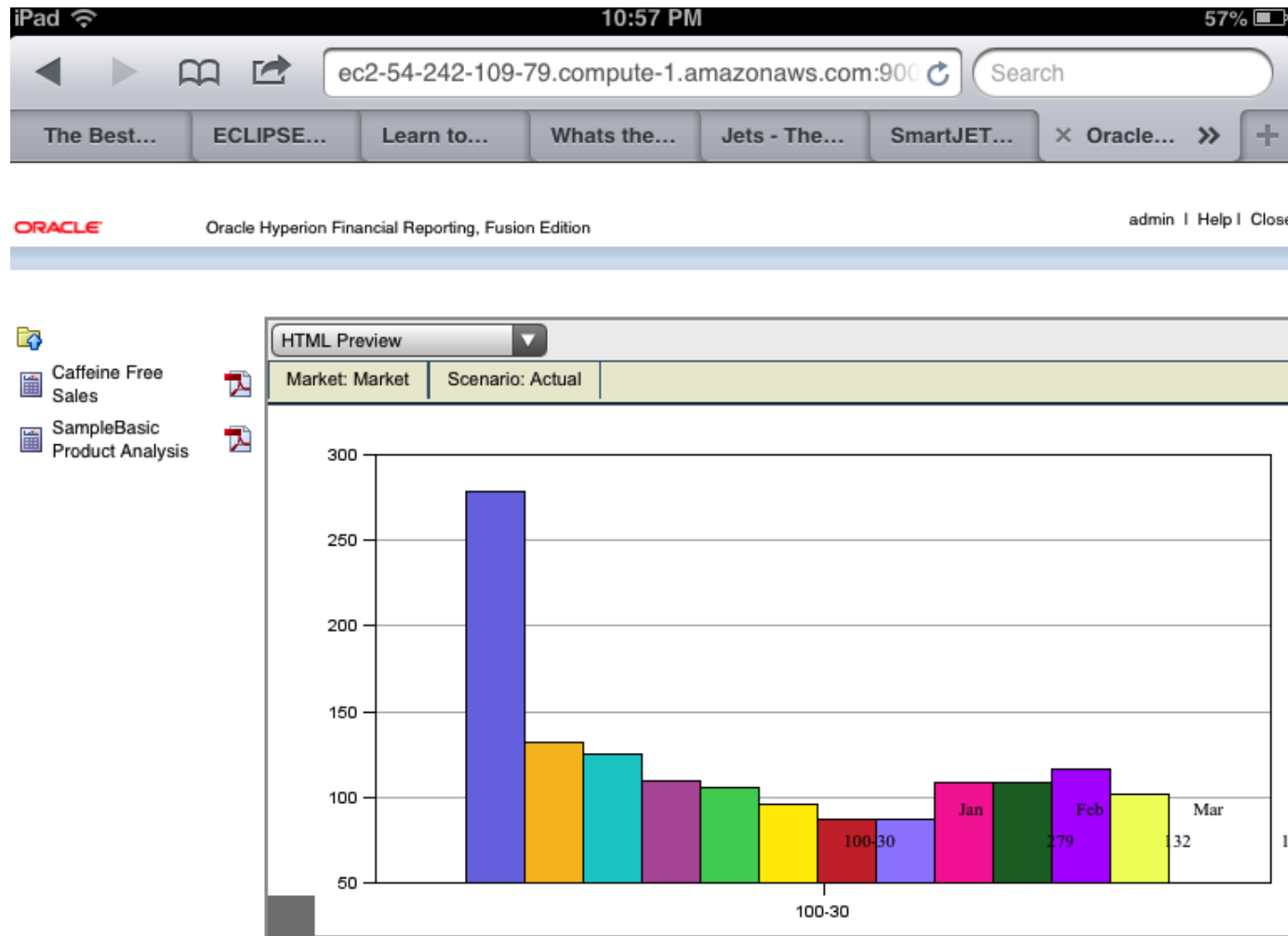
- Administration
- Broadcast Messages
- Crystal Ball Workbook
- DemoReports**
- MSA_Proj
- PFP_Base
- Sample Content
- Shared Workspace
- Pages
- System
- Users



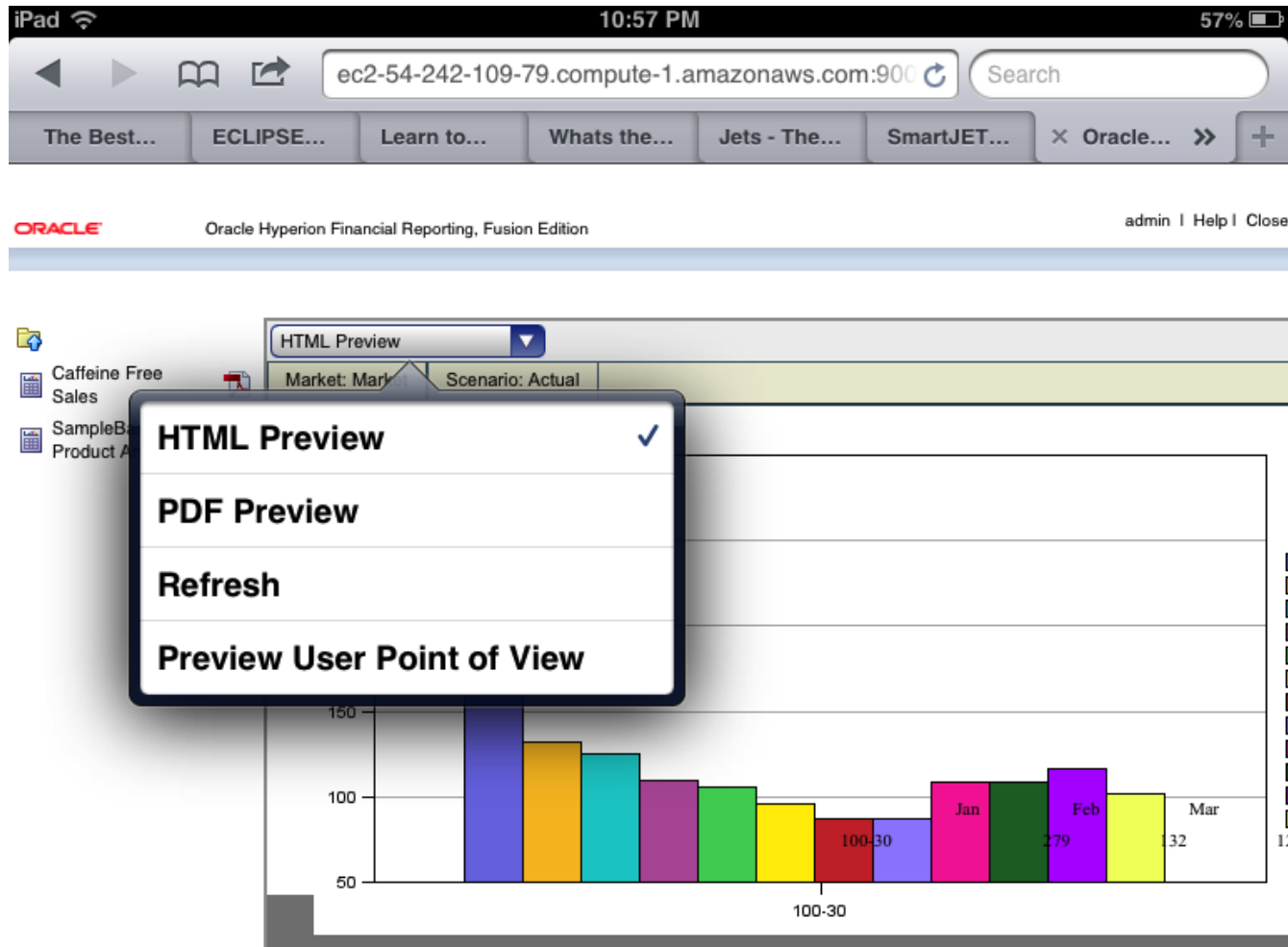
Please select a report or book from left.

-  Caffeine Free Sales
-  SampleBasic Product Analysis

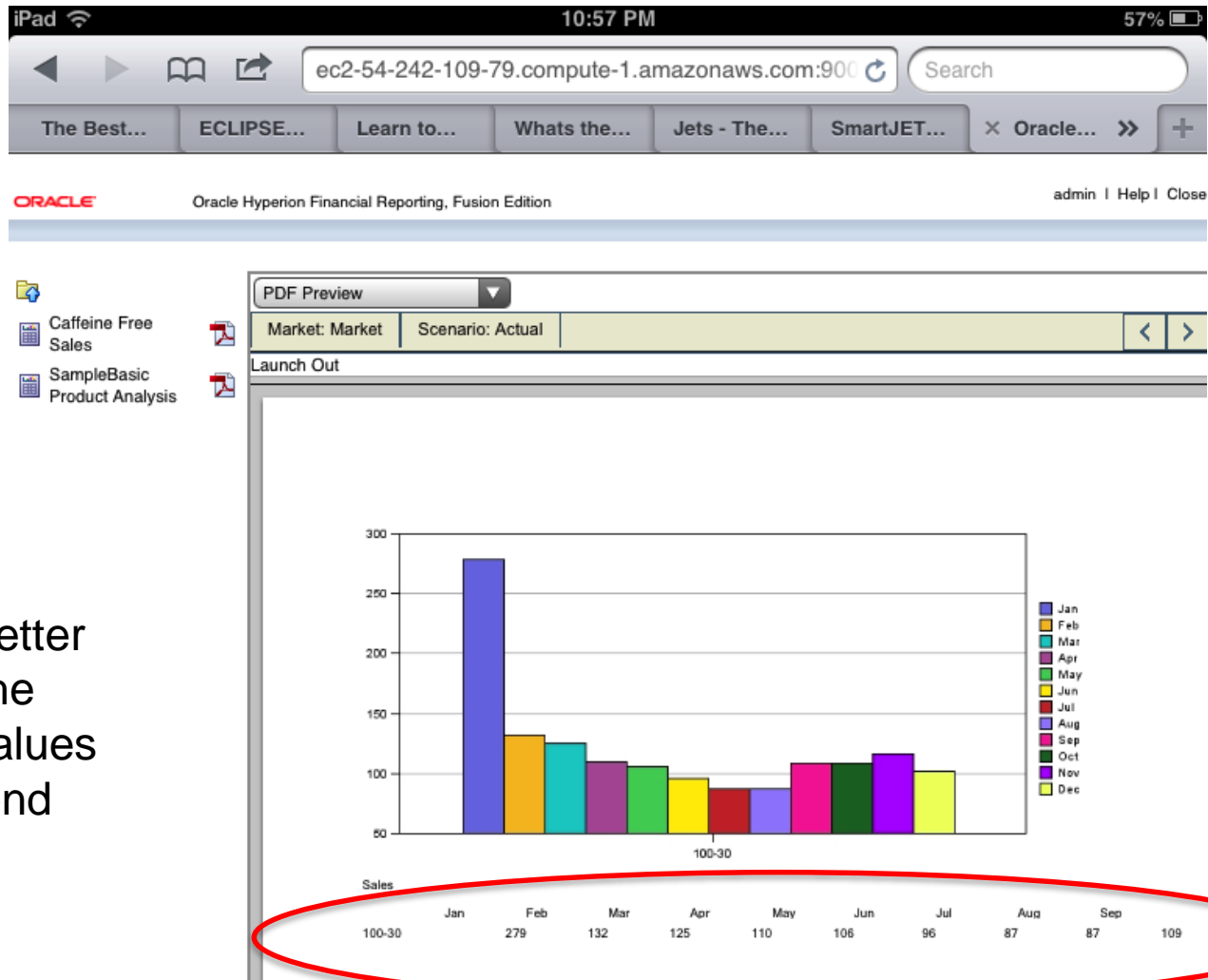
Bar Chart in Safari HTML Preview



Changing Views



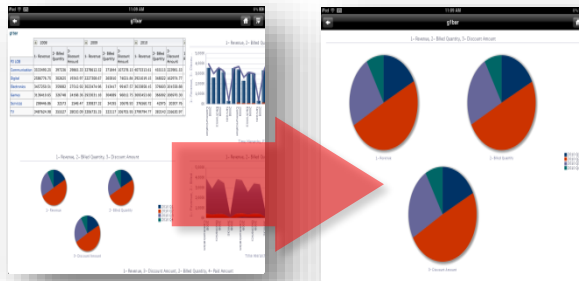
PDF Preview of the same Bar Chart



Notice the better spacing of the numerical Values and the legend

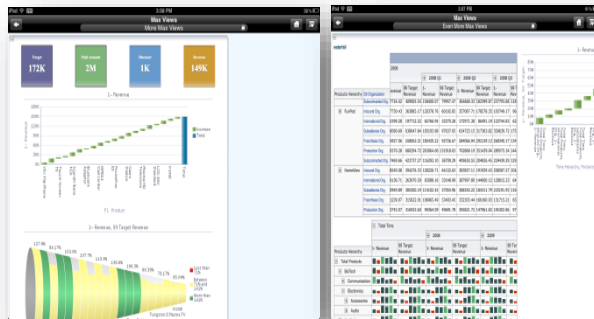
OBIEE 11.1.1.7

Oracle BI Mobile Improvements



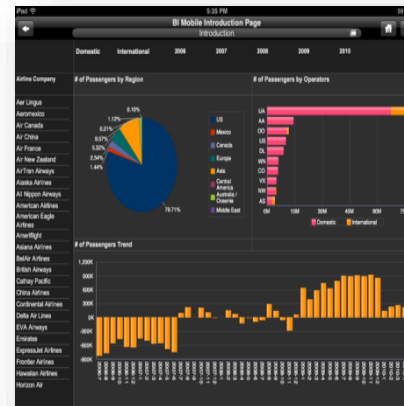
Maximize Views

Double-tap to maximize/restore view; utilizes full consumable real-estate on the device



Advanced Visualizations

Performance Tile, Waterfall, Trellis views enabled for mobile interactions; Swipe gesture to navigate data in tables



BI Publisher Integration

Offline support and fully interactive views on BI Mobile client



BI Mobile Security Toolkit

Available via OTN download. Supports the internal delivery of a packaged/certified BI Mobile application. Specialized licensing restricts customizations to security modifications

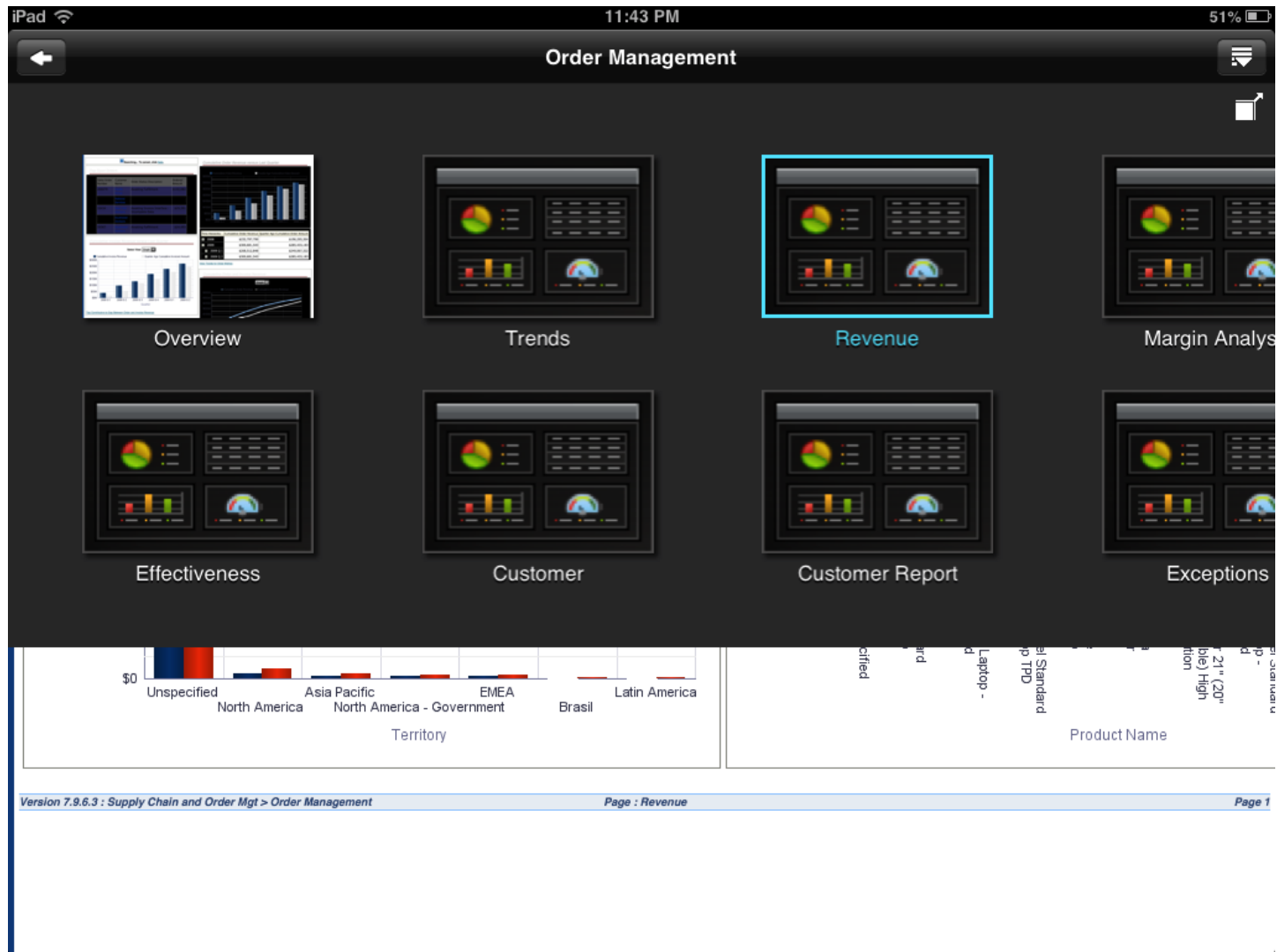
OBI Mobile HD App



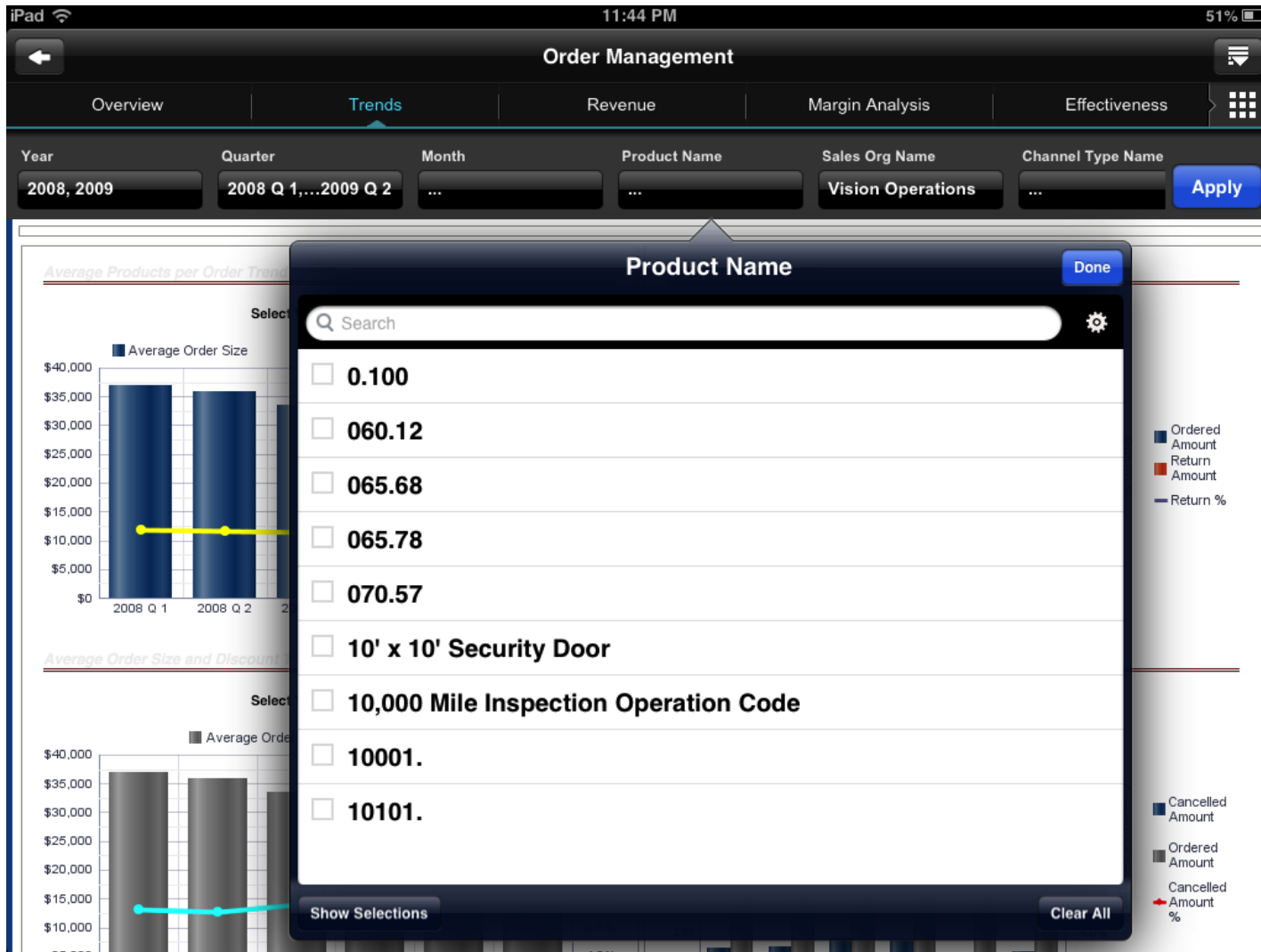
OBI Mobile NON-HD App



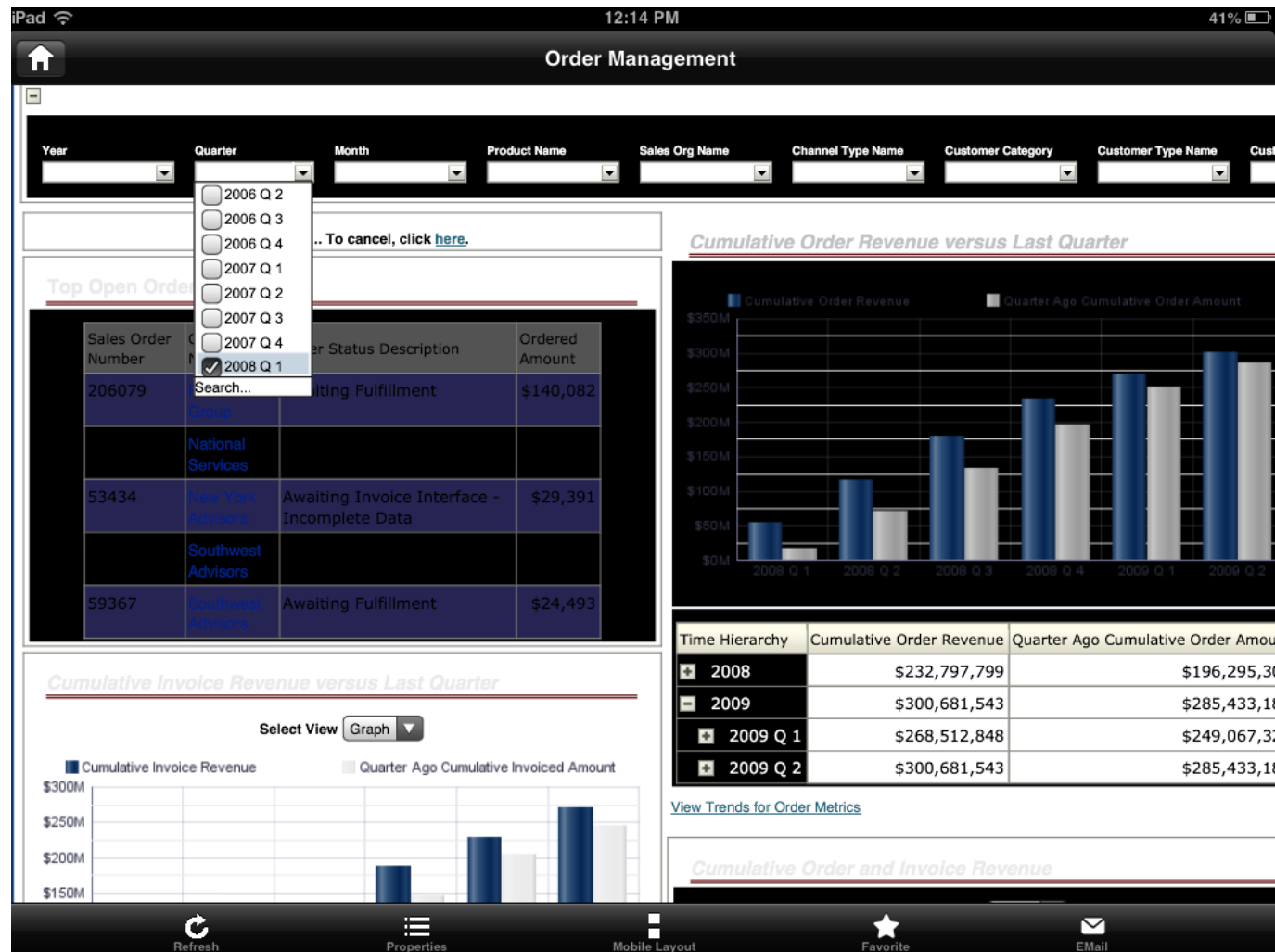
Navigate within the Dashboard



Filter Selections HD OBI App



Filter selections Non-HD BI App



Navigate within the App



Graphics are comparable to Desktop



Desktop View of Trends



Oracle BI Mobile Direction



BI Mobile Consumer



IT Controlled – Managed, Consistent

- Support users throughout their work.
- Enterprise or Operational
- Sophisticated and reusable content



BI Mobile Author



Function Specific – Tailored to Service

- Purposeful, pre-built apps for reporting
- High fidelity design and layout
- Multi-source, cloud data and task-oriented

Secure Mobile Access, Anywhere, Anytime

Oracle BI Foundation



Full power of Oracle BI 11g

Access to custom and prebuilt analytic applications

Secure, interactive and personalized application

Build once, consume anywhere, anytime

Another Option for Mobile Dashboards

- CXO Cockpit
 - Easy to use
 - Very easy to set up against HFM & Essbase
 - If I can learn it you can too!



Gartner Research Vice President Phil Redman states:

"The era of the PC has ended. Employees are becoming more mobile and looking for ways to still be connected wherever work needs to be done. The convenience and productivity gains that mobile devices bring are too tempting for most companies and their employees."

CXO-Cockpit Mobile for Hyperion



- ✓ For those Hyperion customers who want just Mobile or a combination of Web-based Dashboards as well as Mobile output
- ✓ CXO-Cockpit is delivered with mobile dashboards fully integrated
- ✓ Full of reporting intelligence
- ✓ Excellent integration with all Hyperion products
- ✓ Book generating capabilities including narratives
- ✓ Quick deployment

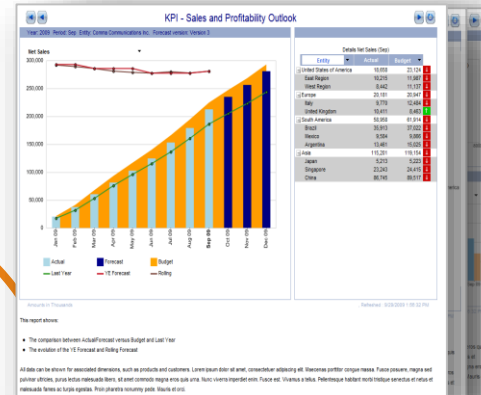


What do EPM users want from their EPM system?

Customizable Dashboards



Classic paper output



Financial Reports & booklets



Mobile Reporting app



CXO-Cockpit Reporting Suite

CXO-Cockpit Oracle Hyperion customers



CXO - Contact Information

USA:

Mike.williams@cxo-cockpit.com

UK & Nordics:

Mark.armstrong@cxo-cockpit.com

Rest of the World:

Jean-pierre.quaedvlieg@cxo-cockpit.com

All contact details can be found on:

www.cxo-cockpit.com



Tablet & BI Mobile Strategy

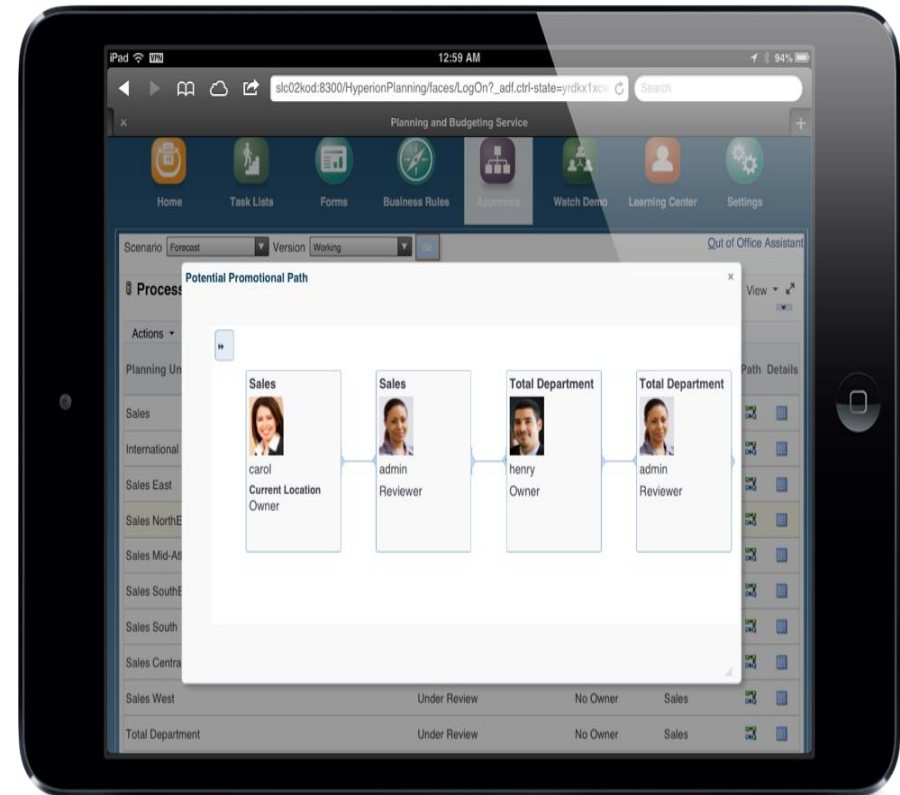
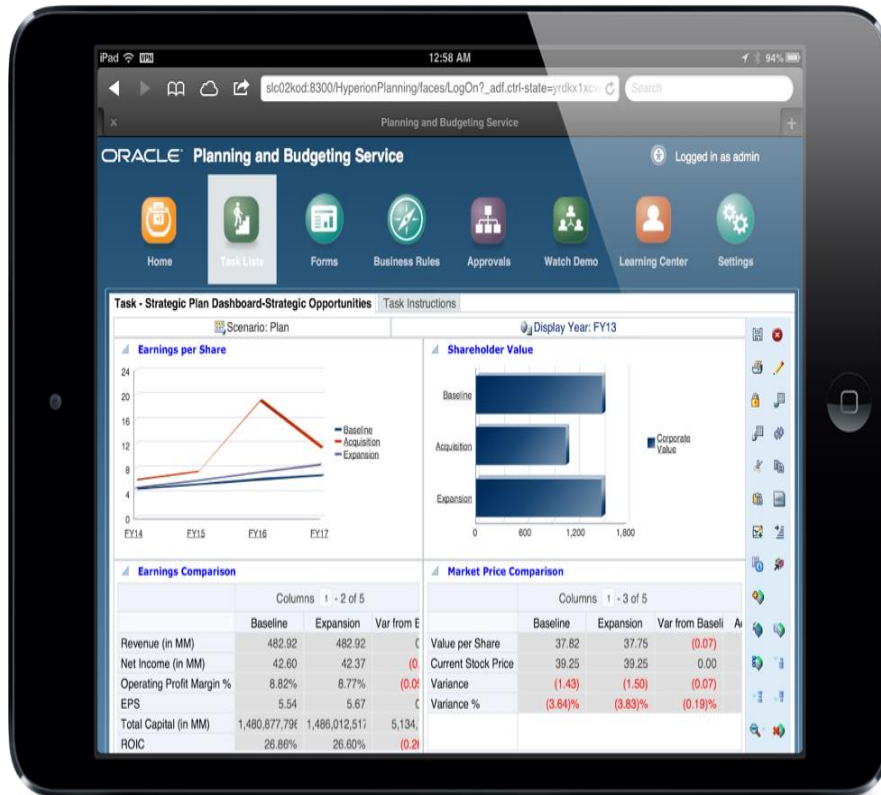
- Financial Reports Mobile
 - Out of the box existing since 11.1.2.2
 - Need to optimize some reports for Mobile experience
- OBI HD Tablet App
 - Getting better and better
 - Area of heavy investment by Oracle
 - Need OBIEE Foundation in order to leverage with EPM
- CXO Cockpit
 - Easy to use
 - Very easy to set up against Hyperion software
 - Not as much overhead in order to use against EPM
 - Develop for Web, Print & Mobile all in one place!

EPM Mobile Strategy – The Future

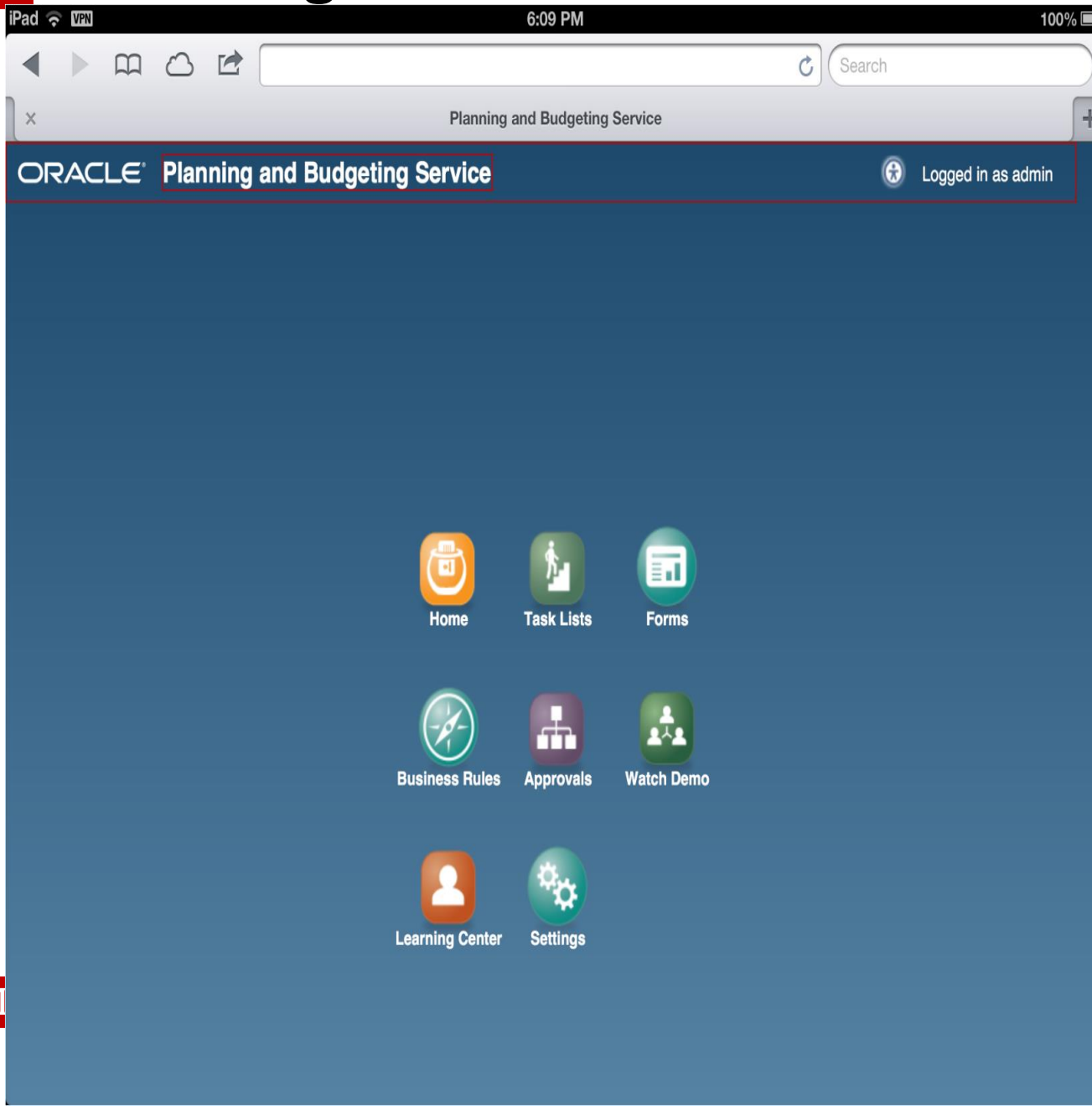
- **Under Development:** Business User Functionality, Workflows, and Approvals
 1. Hyperion Planning Mobile App: Fully functional browser experience, optimized for mobile, for 90% of all end-user functionality
 2. Specialized EPM Workflow Mobile App: Purpose-built mobile app, addressing approval workflows across Planning and Financial Close domains



Hyperion Planning Mobile Browser Support



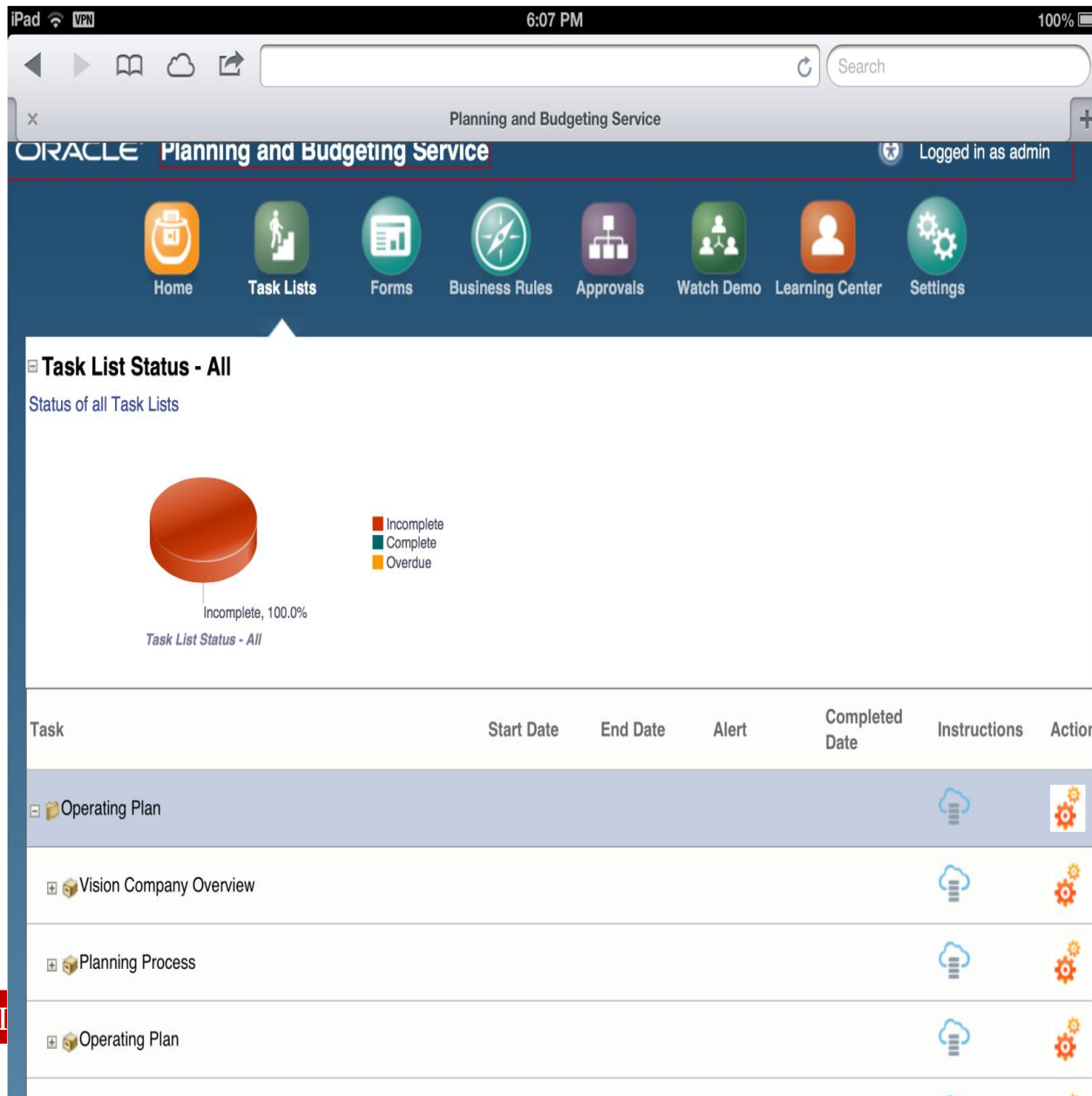
Planning Mobile Home Screen



- Early Tablet UI screen mockups

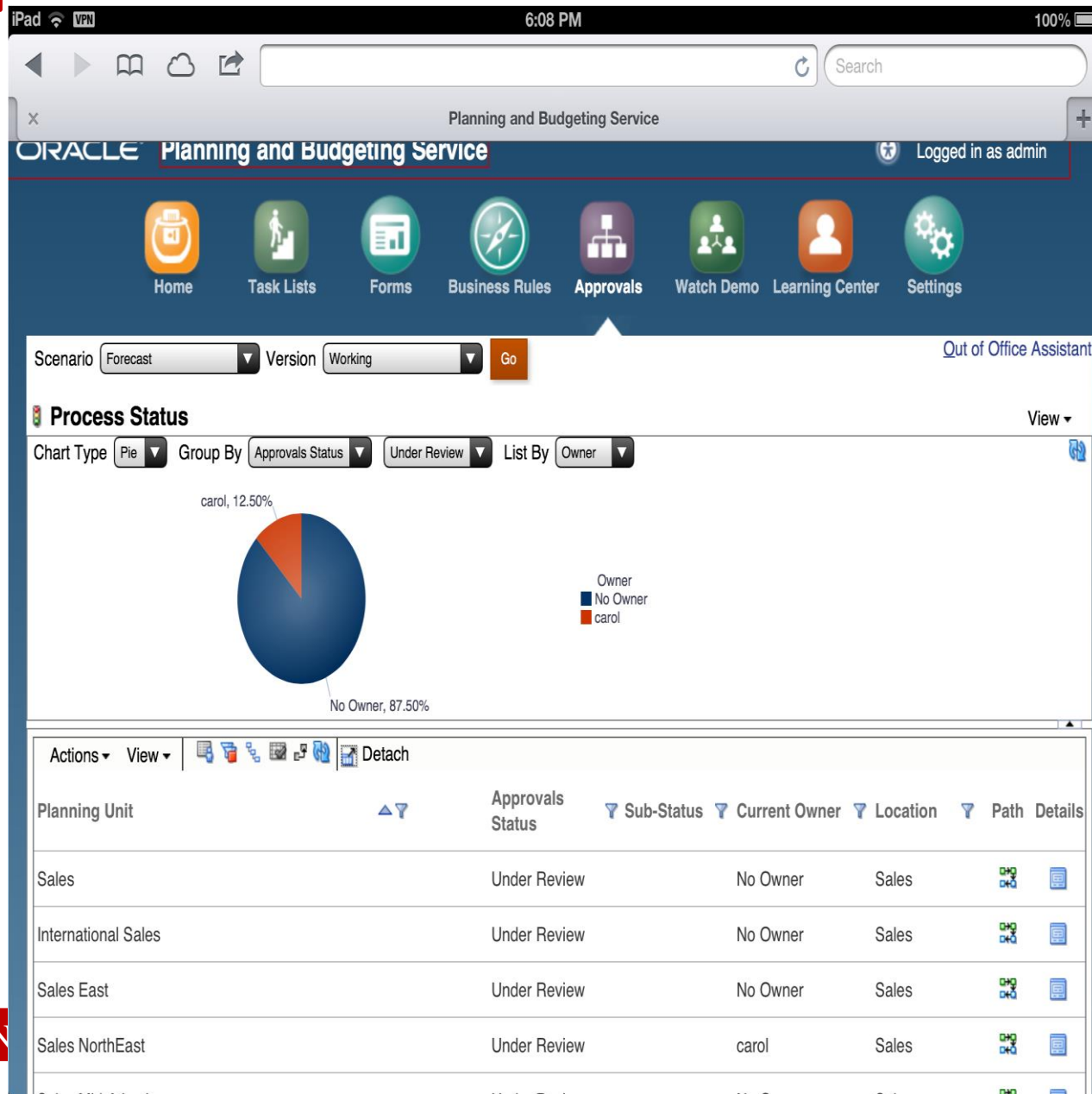
Planning Mobile Task List

- Early Tablet UI screen mockups



Planning Mobile Approvals

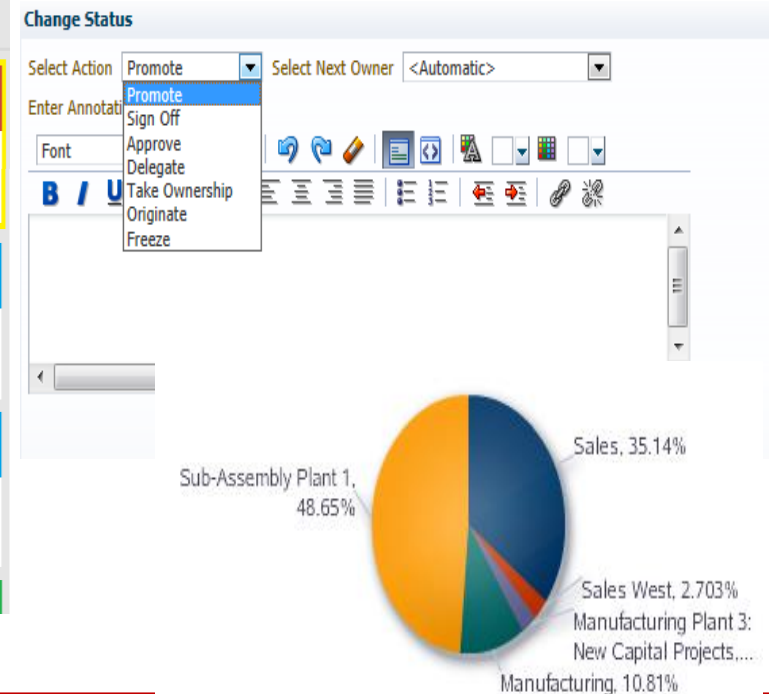
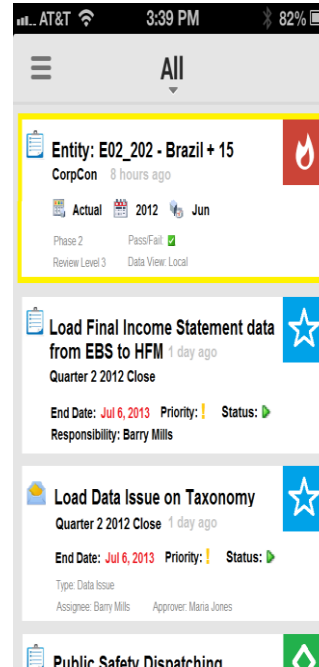
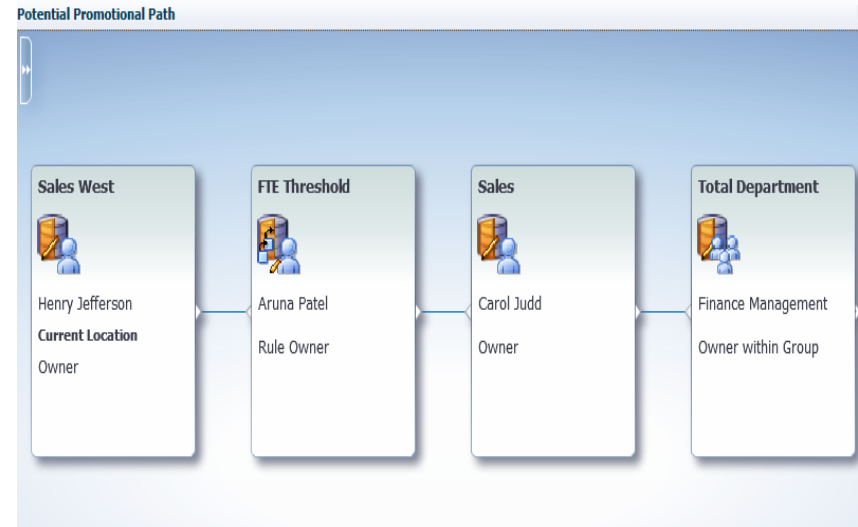
- Early Tablet UI screen mockups



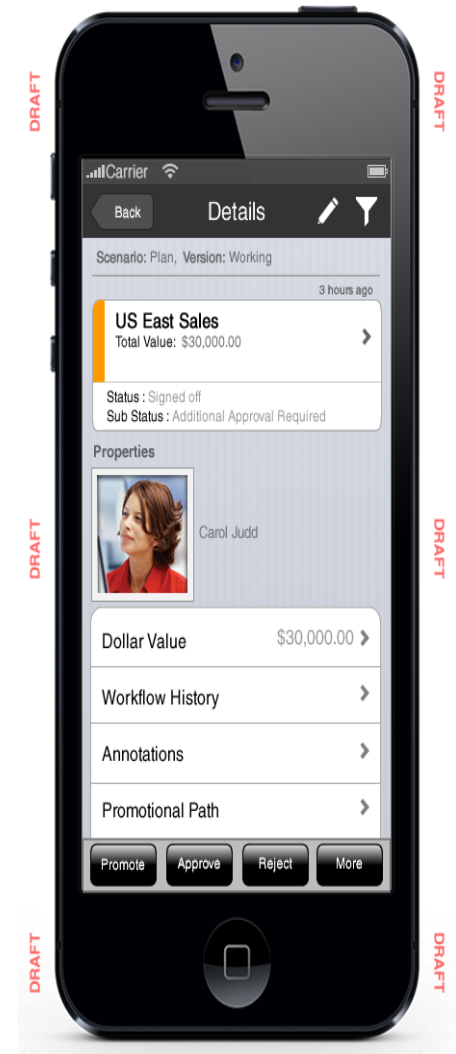
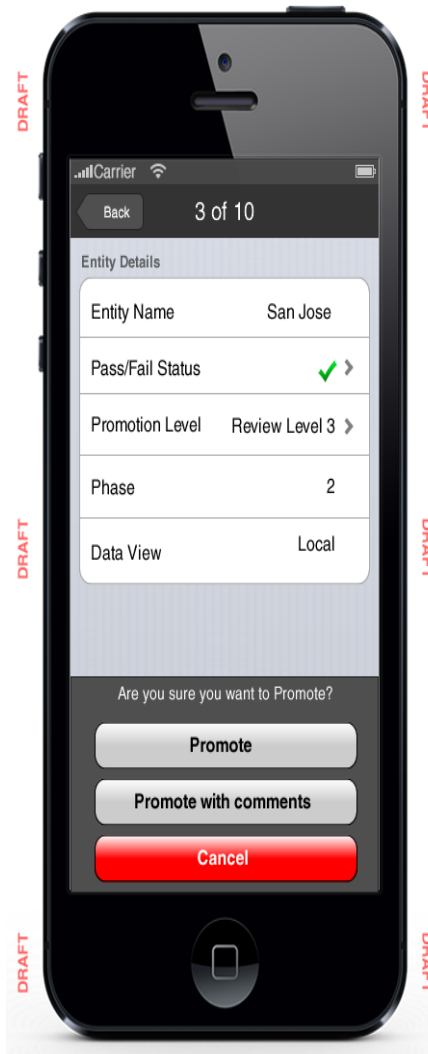
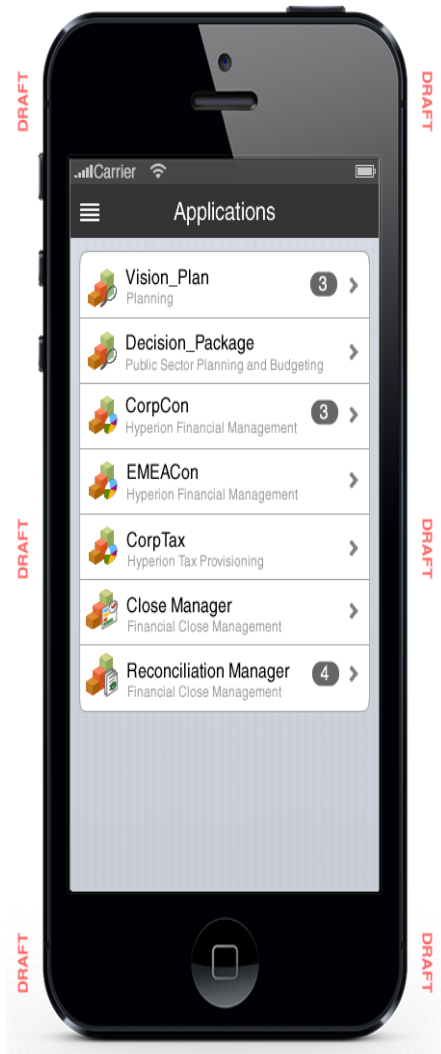
EPM Mobile Approvals Application

Planning Use Case

1. Planning Unit Owner Action List
2. Review Justification / Annotation
3. Validate
4. Review Promotion Path
5. Add Annotation
6. Change Status



EPM Mobile Workflow App



Mobile Approvals App Thoughts

- Nice to be able to “get work done” on the run
- Need more info before I feel comfortable “approving” anything
- Needs a complimentary information provider!



TALVIS

Introduction to  Savant

TWO QUESTIONS FOR YOU...



Have you heard of the expression...

“Information at the speed of thought”

Have you seen software that can actually achieve this?

The Typical Data Flow



Question is asked, or thought, by information seeker

Start



Calls or sends email to financial department. Call or email is rerouted to system expert who has the ability to create the necessary query

5 Minutes



FP&A analyst reads email, opens Excel and Hyperion SmartView

5 Minutes



Creates SmartView query and identifies the 10 to 12 dimension values to correctly answer the question. Builds charts/graphs and drafts response back to information seeker

15-20 Minutes

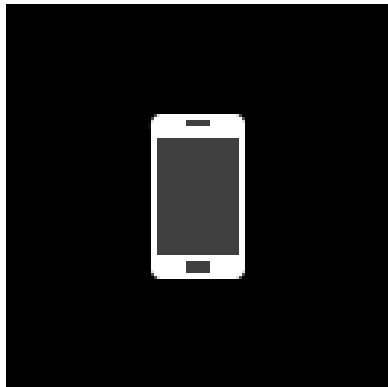


FP&A analyst sends information and prepares for follow up

5 Minutes

Total: 20 to 30 Minutes

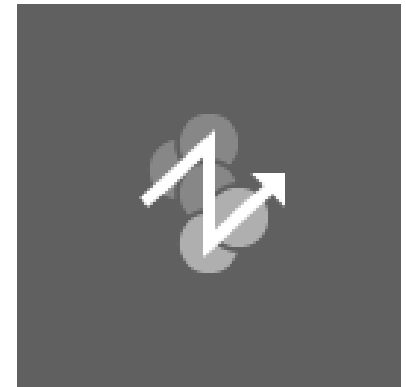
WHAT IS SAVANT?



MOBILITY



**VOICE
RECOGNITION**



INSTANT RESULTS

From 30 minutes to **3 seconds**

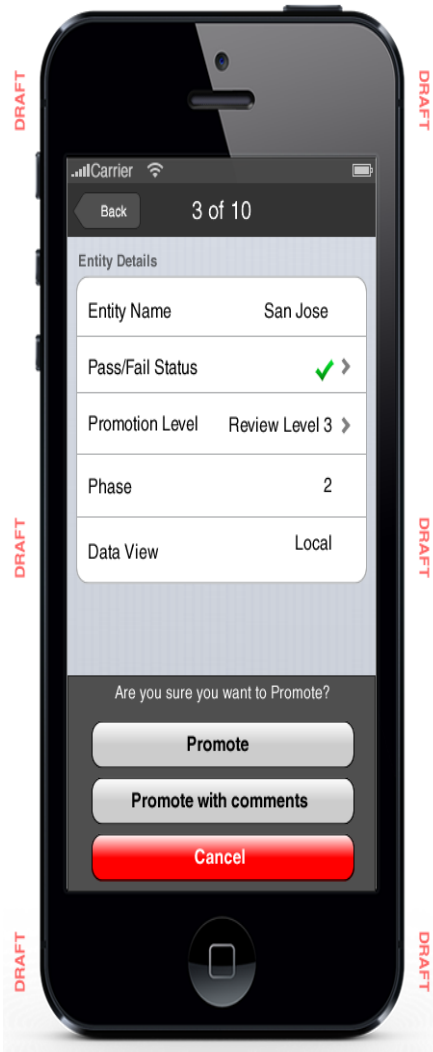
HOW IS SAVANT DIFFERENT?



MINDSTREAM[®]
ANALYTICS

Category	Standard Dashboard Environment	Savant
Speed	300 seconds to find answer	<3 seconds to find answer
Reporting Flexibility	Large environment with fully customizable reports	Simple three pronged approach – Chat, Chart & Report
Hardware	Multiple servers	Can be deployed on any existing server with 5 GB storage
Support	Full time employee(s) to manage dashboard development	3-4 hours per month of administration
Data Limitation	Cached data for performance maximization. Finite number of data points	Every intersection available that exists in Hyperion. No caching gives users the most up-to-date data
Deployment Time	12-36 months deployment + 12 weeks per dashboard	1 day deployment + 3-4 weeks per cube

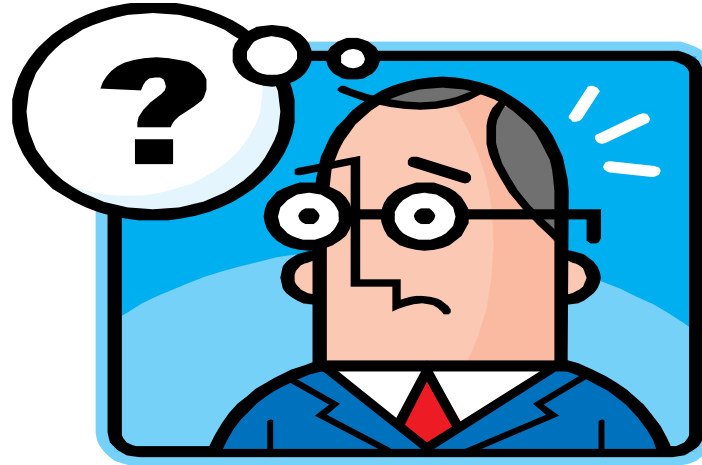
Smartphone Strategy



- Mobile Approval Application is a good start
- Savant provides easy of data access and a good compliment to the Mobile Approval app
 - Easy to switch to a voice recognition app, get question answered and then approve or reject



Questions?



Contact Information

Email: aladd@mindstreamanalytics.com

Telephone: 917-579-0926

EPM Mobile Strategy

- **Available Today:** Focus on Information Consumption
 1. Financial Reporting mobile browser support – EPM and Fusion
 2. BI Apps for EPM (e.g. OFMA, OFPA) using current and future OBI Mobile products
- **Under Development:** Business User Functionality, Workflows, and Approvals
 1. Hyperion Planning Mobile App: Fully functional browser experience, optimized for mobile, for 90% of all end-user functionality
 2. Specialized EPM Workflow Mobile App: Purpose-built mobile app, addressing approval workflows across Planning and Financial Close domains



Planning & Budgeting Cloud Service



- SaaS application for Financial Planning
- What it is:
 - Based on Hyperion Planning solution
 - Leverages the Oracle Cloud enterprise-grade infrastructure
 - Available stand-alone or with the Oracle ERP Fusion Financials Cloud Service
- Availability: **CY 2013**



TALVIS

Introduction to  **savant**

TWO QUESTIONS FOR YOU...



Have you heard of the expression...

“Information at the speed of thought”

**Have you seen software that can
actually achieve this?**

The Typical Data Flow



Question is asked, or thought, by information seeker

Start



Calls or sends email to financial department. Call or email is rerouted to system expert who has the ability to create the necessary query

5 Minutes



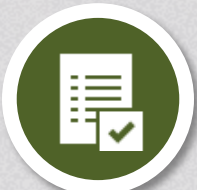
FP&A analyst reads email, opens Excel and Hyperion SmartView

5 Minutes



Creates SmartView query and identifies the 10 to 12 dimension values to correctly answer the question. Builds charts/graphs and drafts response back to information seeker

15-20 Minutes



FP&A analyst sends information and prepares for follow up

5 Minutes

Total: 20 to 30 Minutes

WHAT IS SAVANT?



MOBILITY



VOICE RECOGNITION



INSTANT RESULTS

From 30 minutes to **3 seconds**

HOW IS SAVANT DIFFERENT?



Category	Standard Dashboard Environment	Savant
Speed	300 seconds to find answer	<3 seconds to find answer
Reporting Flexibility	Large environment with fully customizable reports	Simple three pronged approach – Chat, Chart & Report
Hardware	Multiple servers	Can be deployed on any existing server with 5 GB storage
Support	Full time employee(s) to manage dashboard development	3-4 hours per month of administration
Data Limitation	Cached data for performance maximization. Finite number of data points	Every intersection available that exists in Hyperion. No caching gives users the most up-to-date data
Deployment Time	12-36 weeks deployment + 12 weeks per dashboard	1 day deployment + 3-4 weeks per cube

Savant Demonstration



Website www.talvisllc.com

Email: info@talvisllc.com