

ONESTREAM XF  
CPM 2.0: SmartCPM™

**An agile platform  
for financial insight  
and reporting**



## CPM 1.0: The risk, cost and complexity of suites and modules

How many products, modules or applications are required to deliver the promised insight of Corporate Performance Management (CPM)? How quickly can your business adapt to the constantly changing internal and external financial reporting requirements? This multi-product approach results in increased complexity, risk and cost due to:

- ⊗ Product and module silos
- ⊗ Increased integration risk
- ⊗ Lengthy and expensive implementations
- ⊗ More time spent on system mechanics than analytics
- ⊗ Software upgrade and infrastructure paralysis
- ⊗ Multiple maintenance points

## CPM 2.0: SmartCPM

Get Back to Business with OneStream XF



### Increase agility with a SmartCPM system

How quickly can your company adapt to changes such as acquisitions, divestures, reporting structures or new planning requirements? Engineered to work together, OneStream XF lets you leverage and extend dimensions in a single application to dramatically lower the cost of deploying new analytic solutions. By offering SmartCPM, OneStream XF (Extensible Finance) enables business agility.

### Get more value from the XF MarketPlace

The XF MarketPlace is a customer self-serve solution center containing full functioning solutions such as our Account Reconciliations or specialty planning solutions like Capex Planning or People Planning. All 40+ XF MarketPlace Solutions, developed by OneStream, are free and can be downloaded and quickly deployed into your existing application with no added complexity. **Get back to business** by leveraging these powerful solutions that shorten the time to value by allowing you to start solving the business problem on day one.

### Financial consolidation and reporting

Built upon twenty years of inventing the market-leading solutions, our agile consolidation and reporting platform delivers a simplified solution for complex organizations.

### Budgeting, forecasting and specialty planning solutions

OneStream offers a complete spectrum of planning solutions in one application. Deliver any required budget or forecast methodology with the ability to seed, revise, spread, allocate, utilize drivers or build from scratch.

### Guided Workflows for data quality

Guided, end-user tasks simplify processes allowing users to focus on data quality and results instead of system mechanics.

### In-solution reporting and guided analytics

Guided analytics empowers business users and delivers the right analytics at the right time. OneStream eliminates the need to manage multiple reporting silos.

### XF Office Blend

OneStream data is immediately updated and refreshed via our XF Office Blend for Word®, PowerPoint® and Excel® with powerful Office integration.

OneStream supports a completely virtualized environment with  
XF Cloud or on-premise deployment options



- Perpetual or subscription licensing
- Move to and from on-premise and cloud
- Guaranteed resources and performance on demand

- 99.95% uptime guaranteed
- OneStream Managed Services
- Upgrade on your time frame in less than 2 hours

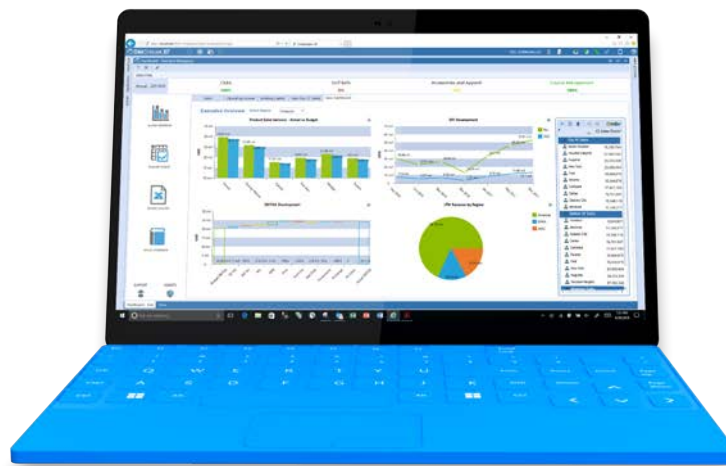
## Data quality for confidence and compliance

### Financial data for reporting and analytics has to be right

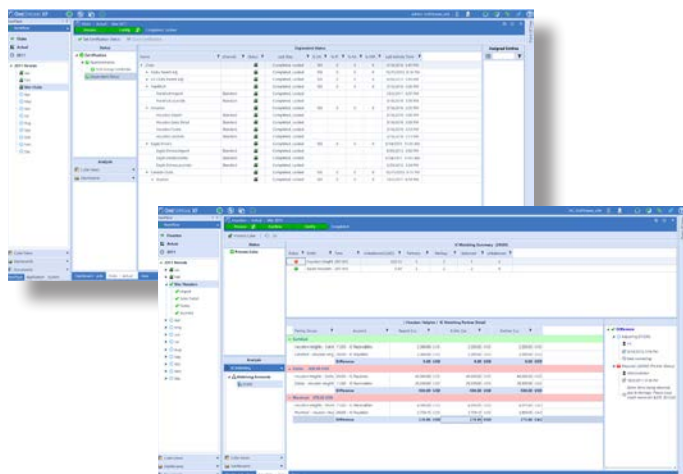
OneStream XF employs Guided Workflows, validations and flexible mapping to deliver data quality confidence for all collections and analysis. These often overlooked capabilities can be the difference between success and failure. Our advanced integration connectors allow us to connect directly to source systems such as SAP® and Oracle®. Our powerful XF Data Blend allows us to integrate and combine transactional and analytic data for the most efficient analytical design.

### Powerful XF Integration Connectors

- Guided connector wizard to help build ODBC, OLEDB and Web Services integrations
- Deliver fast and efficient source system direct integration processes
- Drill down, drill back and drill through to transactional details, including journal entries, with powerful direct integration technology



## Simplified financial consolidation and reporting for complex organizations

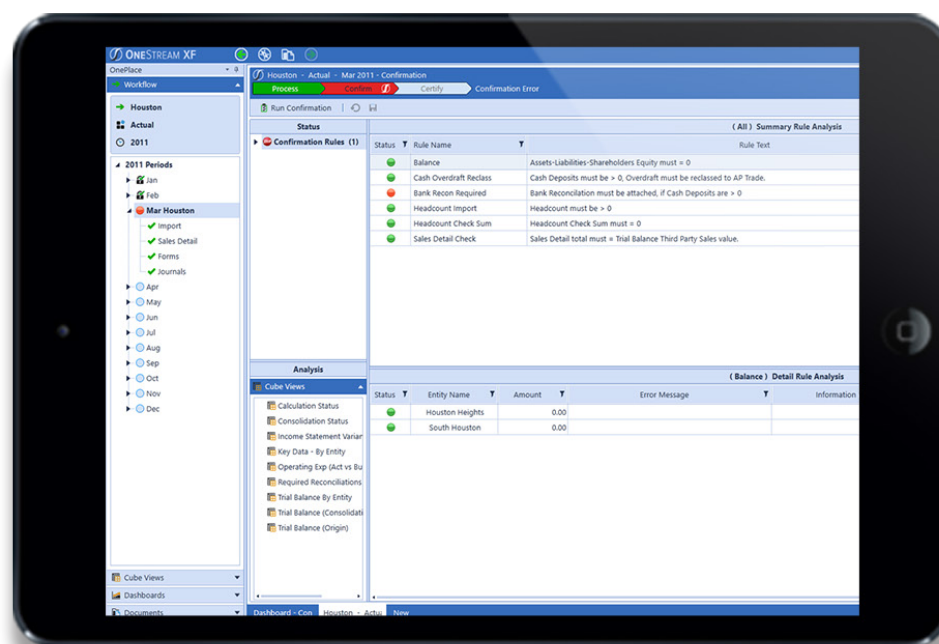


OneStream XF reduces internal control risk and delivers confidence in external and management reporting. Our consolidation functionality delivers high performing and true statutory compliant consolidation with multicurrency, partial ownership, journals, allocations, multi-GAAP reporting and exchange rate nominalization. With the most advanced audit trail, drill down and drill back capabilities of any system, OneStream XF offers 100% transparency and controls.

Maximize performance and agility with the ability to automatically eliminate at the first common parent with complete visibility to all eliminations. Powerful collaboration tools for end users to address mismatches instantly in the workflow process. Building alternate hierarchies in OneStream is a task, not a project. This core capability delivers financial reporting confidence

## Lower your total cost of ownership with more standard functionality:

- 🌀 Flow dimension for cash flow and advanced currency translation
- 🌀 Origin dimension for better audit control
- 🌀 More advanced annotation functionality
- 🌀 Account Reconciliations (Free downloadable XF MarketPlace Solution)
- 🌀 Close Management
- 🌀 Immediate error identification and resolution



## Flexible budgeting, forecasting and planning

### Gain Insight into the impact of business change

Extensible Dimensionality® offers business units the ability to budget, forecast, and model at relevant and unique levels of detail – all in one application. Extensibility protects the sanctity of actuals when budget metadata is updated or changed. Because OneStream is unified for both consolidation and planning, intercompany is available out-of-the-box regardless of the scenario – actual or plan. Since all data lives together in one application, seeding budgets and forecasts is automated.

Specialty solutions are available free of charge for Cash Planning, People Planning, Capex Planning and Thing Planning. These specialty solutions all leverage XF Relational Blend that utilizes relational tables to offer more detailed budgeting capabilities without compromising performance.



## In-solution reporting delivers a single lens for finance

OneStream XF provides a full spectrum of reporting tools for every user type. Report definitions are built once and re-used in production reports, Excel, dashboards, grids and forms for a single point of report maintenance. Our reporting is low maintenance and flexes as metadata changes. Our XF Office Integrator delivers true Microsoft Office integration to Word, PowerPoint and Excel. Office documents, XF data and reports all combine to deliver documents and report books such as a 10k, PowerPoint deck or financial reporting book.

- XF Guided Reporting mixes and matches pre-built rows and columns for infinite reporting combinations
- Faster time to insight with XF Quick Views that offer easy Excel ad-hoc drag, drop and pivot analysis
- Interactive Dashboards are authored in the solution by Finance users
- Leverage familiar Excel retrieve
- Combine operational sources with OneStream XF data for a single lens to view all relevant information

**Balance Sheet (Risk Mgmt)**

	Inquired TB	Reason % Comp	IS Correction	BS Correction	Manual Entry	Top Side JV
Petty Cash	5,008,150	100	24,458	0		
Cash Deposits	88,768,489	17	0	0		
Marketable Securities	12,123,388	100	0	0		
Restricted Cash	11,128,389	100	0	0		
<b>Total Cash</b>	<b>117,880,419</b>	<b>0</b>	<b>0</b>	<b>0</b>		
Trade Receivables	36,968,763	100	0	0		
IC Receivables	12,000	100	0	0		
Allowance for Doubtful Accounts	3,282,756	100	0	-40,963		
<b>Net Accounts Receivable</b>	<b>33,728,007</b>	<b>0</b>	<b>0</b>	<b>0</b>		



## OneStream XF MarketPlace

### Reduce the complexity, risk and cost of deploying additional solutions

#### **Our 40+ XF MarketPlace Solutions allow you to more easily adapt to your changing requirements**

The OneStream XF SmartCPM platform enables maximum re-use of core CPM platform functionality. The XF MarketPlace Solution Center will revolutionize the CPM market and deliver new solutions and functionality with a simple download. Customers are able to extract additional value from their investment in OneStream XF long after the initial purchase.

- XF MarketPlace solutions leverage the core XF SmartCPM system for data quality, calculations, reporting and more
- XF MarketPlace solutions meet and exceed product-specific offerings
- Any XF Marketplace Solution can update independently of the OneStream XF core product; and, conversely, the core product can upgrade without impacting the reliability of your MarketPlace solution(s)



#### **Account Reconciliations**

The OneStream XF Account Reconciliation solution with single-source trial balance loads offers a new level of risk management and delivers the most comprehensive and unified Account Reconciliations directly within the core Guided Workflow process.

#### **People Planning**

Employee and contractor compensations, benefit, travel and expense planning come out of the box with our pre-built solution. OneStream XF's People Planning solution delivers the required insight into your most valued asset, your people!



#### **Capital Planning**

OneStream XF's Capex Planning solution streamlines the planning of capital assets and their related expenses including depreciation, maintenance and insurance. Immediately understand the impact of capital expenses on overall expenses and financial statements as Capex Planning acts as an input to your overall plan.



## Cash Planning

Model the impact of change to all cash sources and uses including payables, receivables, investments, capital expense, financing and more. Immediately understand the impact of cash sources and uses on financial statements as Cash Modeling acts as an input to your overall plan.

## Close Manager

The OneStream XF Close Manager provides the ability to track any close task, successor and predecessor responsibility and status with complete visibility to all changes and key close statistics to keep maximum control and transparency during the critical close cycle.



## Guided Reporting

Mix and match rows and columns with other key parameter selections and views for infinite reporting combinations in one easily consumable end-user interface.

## Postal Service

A powerful and flexible reporting package delivery solution enabling the scheduled delivery of combined XF Office Blend and OneStream reports to individuals and groups.



## Video Training

Our Video Training solutions provided an example training video to end-users at the right time in the process. It creates the required buckets to enable context sensitive videos to be delivered directly in the Guided Workflow process.





North America Headquarters  
362 South Street  
Rochester, MI 48307-2240  
Phone: +1 (248) 650 1430

North America Sales Office  
3400 Peachtree Road NE  
Suite 710  
Atlanta, GA 30326

Development Office  
50 Housatonic Ave  
Stratford, CT 06615



EMEA Head Office / DACH Region  
Obergrundstrasse 61  
CH-6003 Luzern  
Switzerland  
Phone: +41 79 455 91 36

UK / Ireland Region  
Peter House  
Oxford Street  
Manchester  
M1 5AN  
Phone: +44 7921 181214

Benelux Region  
Poortweg 4A  
2612 PA DELFT  
The Netherlands  
Phone: +31 15 8000 241