



COLLABORATE12

TECHNOLOGY AND APPLICATIONS FORUM
FOR THE ORACLE COMMUNITY



OBIEE & Essbase



The Truth about Integration

Alex Ladd
Sr. Partner
MindStream Analytics





COLLABORATE12

TECHNOLOGY AND APPLICATIONS FORUM
FOR THE ORACLE COMMUNITY

Agenda



- Introduction
- Audience Participation
- Current Essbase & OBIEE Integration Points
 - OBIEE querying Essbase
 - Essbase querying OBIEE (rpd)
- Known Issues
- What Customers are ACTUALLY doing
- Coming Integration!!!!
- Questions



COLLABORATE12

TECHNOLOGY AND APPLICATIONS FORUM
FOR THE ORACLE COMMUNITY

Introduction



Alex Ladd

- 12 Years of Planning/Essbase Experience
- OAUG Hyperion SIG Essbase Domain Lead
- Senior Partner – MindStream Analytics



Contact Information

Email: aladd@mindstreamanalytics.com

Telephone: 917-579-0926



COLLABORATE12

TECHNOLOGY AND APPLICATIONS FORUM
FOR THE ORACLE COMMUNITY

Audience Participation



- How many of you are Essbase Users?
 - What type of Essbase Users? (Add-in, Smart View, Reports)
- How many using OBIEE?
 - Are you here because you might start using Essbase?
- How many have both currently?



COLLABORATE12
TECHNOLOGY AND APPLICATIONS FORUM
FOR THE ORACLE COMMUNITY

OBIEE Querying Essbase



OBIEE as Reporting Tool – Essbase as Data Source

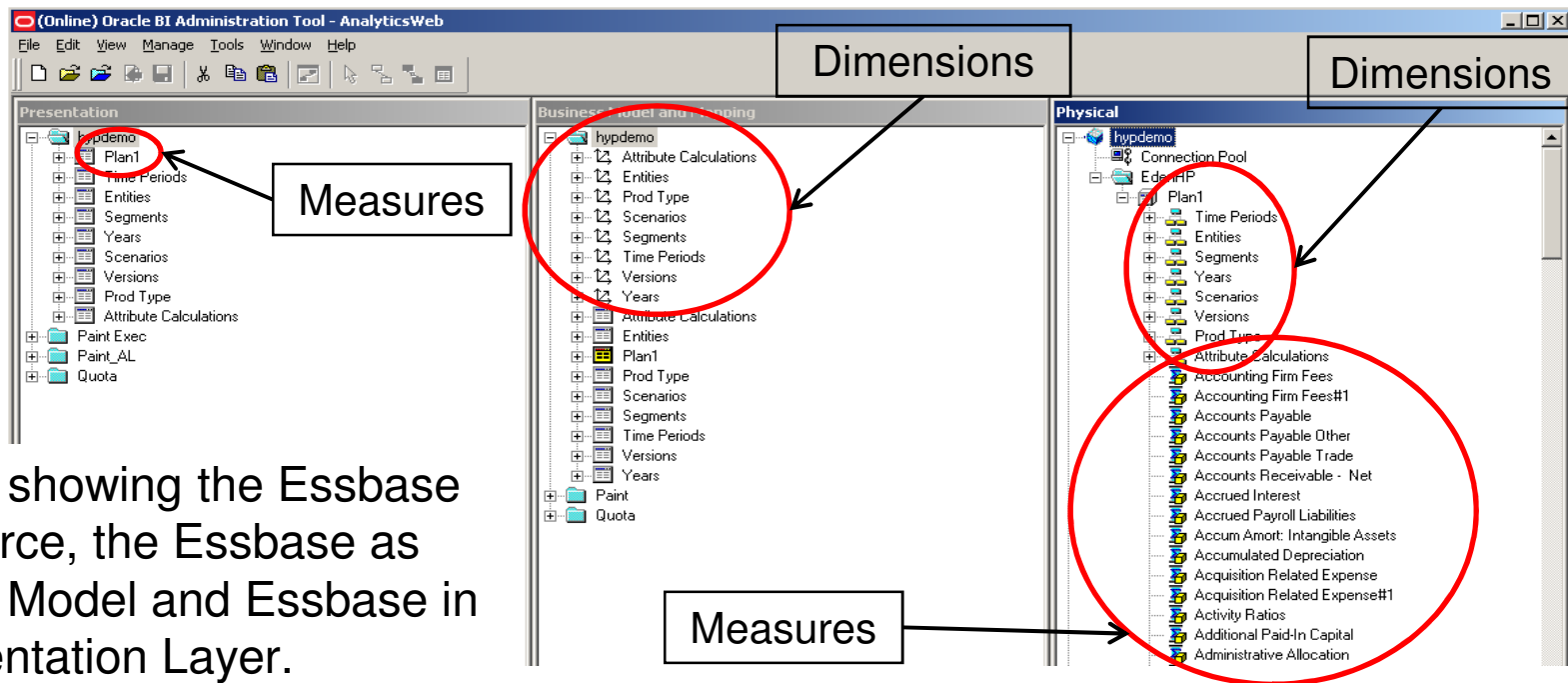
- Basics
 - Can OBIEE Pull Data from Essbase and read the dimension structures? - **YES**
 - Can the Data from Essbase be represented in OBIEE graphs and Dashboards nicely? - **YES**
- More Advanced
 - Can Answers Provide Web Enabled Ad Hoc Analysis with Essbase as the Data Source? – **Kind Of?**
 - Drill Down but not up
 - Can OBIEE provide good financial Reporting from Essbase? - **NO**
 - OBIEE is a relational Query tool so it makes Essbase behave that way too
 - This means that Ragged Hierarchies aren't presented optimally
 - Asynchronous Rows is not supported



COLLABORATE12

TECHNOLOGY AND APPLICATIONS FORUM
FOR THE ORACLE COMMUNITY

Essbase in the RPD file



The RPD showing the Essbase Data Source, the Essbase as Business Model and Essbase in the Presentation Layer.



COLLABORATE12

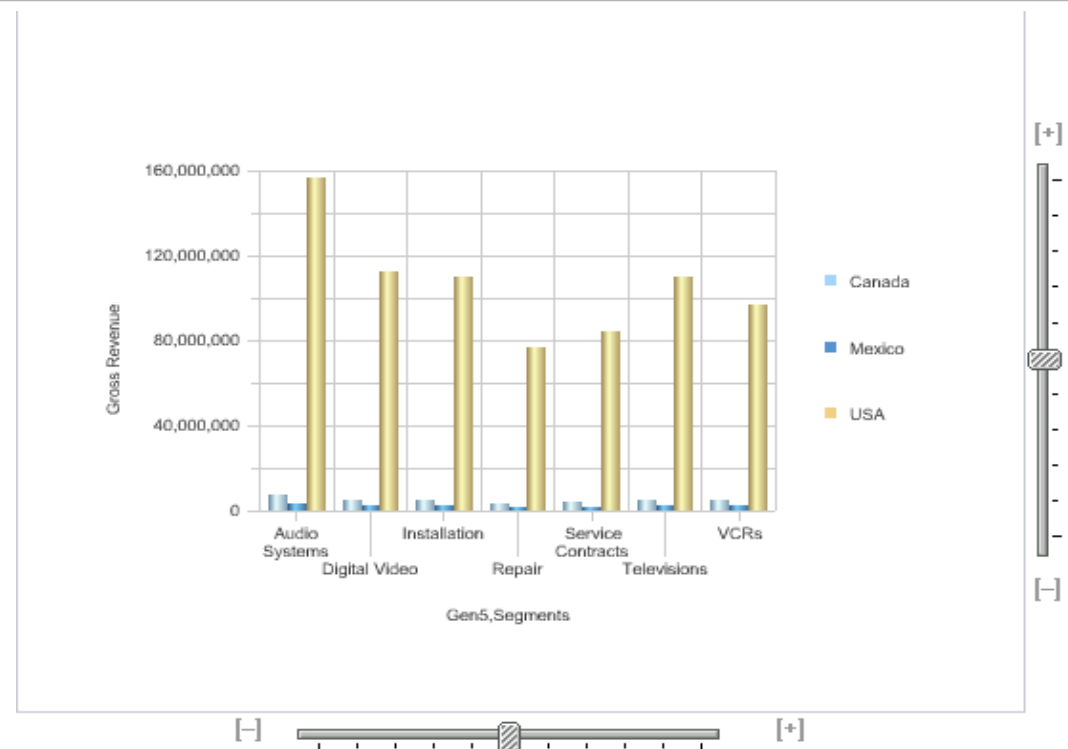
TECHNOLOGY AND APPLICATIONS FORUM
FOR THE ORACLE COMMUNITY

OBIEE Charts



OBIEE Charts with Essbase Data

Here is a multi-bar chart created in OBIEE Answers for use in a Dashboard. The OBIEE charts are very sharp and offer a rich User Interface experience. The Essbase data flows in well.





COLLABORATE12

TECHNOLOGY AND APPLICATIONS FORUM
FOR THE ORACLE COMMUNITY

Drilling Down on Columns



	Gross Revenue		
	Total Geography		
	North America		
	Canada	Mexico	USA
Gen5,Segments			
Audio Systems	7,529,463	3,764,732	156,236,358
Digital Video	5,399,344	2,699,672	112,036,397
Installation	5,281,344	2,640,672	109,587,888
Repair	3,718,391	1,859,195	77,156,604
Service Contracts	4,079,374	2,039,687	84,647,009
Televisions	5,290,985	2,645,493	109,787,943
VCRs	4,672,533	2,336,266	96,955,055



	Gross Revenue	
	Total Geography	
	North America	
	USA	
Gen5,Segments	USA Sales	
Audio Systems	156,236,358	
Digital Video	112,036,397	
Installation	109,587,888	
Repair	77,156,604	
Service Contracts	84,647,009	
Televisions	109,787,943	
VCRs	96,955,055	

Drilling Down on “USA”

By drilling down on the “USA” member the whole flavor of the report changes. Canada and Mexico are removed and the USA child appears. This is the way a relational tool works, think of adding parameter to the WHERE section of a SQL Statement.



COLLABORATE12

TECHNOLOGY AND APPLICATIONS FORUM
FOR THE ORACLE COMMUNITY

Drilling Down on Rows



	Gross Revenue		
	Total Geography		
	North America		
Gen5,Segments	Canada	Mexico	USA
Audio Systems	7,529,463	3,764,732	156,236,358
Digital Video	5,399,344	2,699,672	112,036,397
Installation	5,281,344	2,640,672	109,587,888
Repair	3,718,391	1,859,195	77,156,604
Service Contracts	4,079,374	2,039,687	84,647,009
Televisions	5,290,985	2,645,493	109,787,943
VCRs	4,672,533	2,336,266	96,955,055

					Gross Revenue		
					Total Geography		
					North America		
Gen5,Segments	Gen2,Segments	Gen3,Segments	Gen4,Segments	Gen6,Segments	Canada	Mexico	USA
Digital Video	Total	All Segments	Electronics	DVD Player	2,084,062	1,042,031	43,244,292
				DVD Recorder	709,580	354,790	14,723,782
				DVD/VCR Combo	1,114,303	557,152	23,121,790
				Portable DVD	1,491,399	745,700	30,946,534

Drilling down on "Digital Video"

Drilling down of the "Digital Video" member doesn't result in the same thing that most Essbase Users would expect. Instead we see only the children of "Digital Video" and the rest of the products no longer appear.



COLLABORATE12

TECHNOLOGY AND APPLICATIONS FORUM
FOR THE ORACLE COMMUNITY

Undoing Drill Downs -1



Prior to Drill Down

Notice Gen5,Segments only. The filters are only Scenario, Version, Periods, Year and Entities.

CriteriaResultsPromptsAdvanced

Dashboards - Answers - More Products - Settings - Log Out

OAUG ConnectionPoint Fin Analysis

Columns

Click on column names in the selection pane to add them to the request. Once added, drag-and-drop columns to reorder them. Edit a column's format, formula and filters by clicking the buttons below its name.

Time Periods	Segments	Entities			
Year	Gen5,Segments	Gen2,Entities	Gen3,Entities	Gen4,Entities	Gross Revenue

Display ResultsRemove All

Filters

Add filters to the request criteria by holding down the CTRL key and clicking on column names in the selection pane, or by clicking on the filter button below included columns. Add a saved filter by clicking on its name in the selection pane.

Gen2,Scenarios is equal to / is in Actual

AND Year is equal to / is in YearTotal

AND Gen2,Versions is equal to / is in Working

AND Gen2,Years is equal to / is in Prior Year

AND Gen2,Entities is equal to / is in Total Geography

AND Gen3,Entities is equal to / is in North America

Save Filter...Remove Filters

Combine with Similar Request



COLLABORATE12

TECHNOLOGY AND APPLICATIONS FORUM
FOR THE ORACLE COMMUNITY

Undoing Drill Downs -2



Post Drill Down

Notice all the new segment columns. The filters now have a Segments limitation. In order to drill back up we need to re-launch the original saved version or delete all of the “Criteria” additions the Drill Down added.

CriteriaResultsPromptsAdvanced

Dashboards - Answers - More Products - Settings - Log Out

OAUG ConnectionPoint Fin Analysis

Columns

Click on column names in the selection pane to add them to the request. Once added, drag-and-drop columns to reorder them. Edit a column's format, formula and filters by clicking the buttons below its name.

Time Periods	Segments	Entities
Year	Gen5,Segments	Gen2,Entities
	Gen6,Segments	Gen3,Entities
	Gen4,Segments	Gen4,Entities
	Gen3,Segments	
	Gen2,Segments	

Display ResultsRemove All

Filters

Add filters to the request criteria by holding down the CTRL key and clicking on column names in the selection pane, or by clicking on the filter button below included columns. Add a saved filter by clicking on its name in the selection pane.

Gen2,Scenarios is equal to / is in Actual

AND Year is equal to / is in YearTotal

AND Gen2,Versions is equal to / is in Working

AND Gen2,Years is equal to / is in Prior Year

AND Gen2,Entities is equal to / is in Total Geography

AND Gen3,Entities is equal to / is in North America

AND Gen5,Segments is equal to / is in Digital Video

Save Filter...Remove Filters

Combine with Similar Request



COLLABORATE12

TECHNOLOGY AND APPLICATIONS FORUM
FOR THE ORACLE COMMUNITY

Asynchronous Rows



OBIEE Can't Handle
Asynchronous Rows Well

Could use a CASE for
Gross Rev or OpEx

Gen1,Entities Entities

Gen5,Segments		Q1	Q2	Q3	Q4
Installation	Headcount	310	311	311	311
	Gross Revenue	75,721,270	26,406,720	52,813,440	110,908,224
	Operating Expenses				
	\$\$ per Head	244,262	84,909	169,818	356,818
Repair	Headcount	210	211	211	211
	Gross Revenue	8,660,005	59,400,951	35,880,354	82,463,779
	Operating Expenses				
	\$\$ per Head	41,173	281,521	170,049	390,824
Service Contracts	Headcount	289	289	289	290
	Gross Revenue	31,146,020	32,634,991	42,833,426	97,904,974
	Operating Expenses				
	\$\$ per Head	107,772	112,924	148,213	337,992

\$\$ per Head uses a
CASE Statement

You can make Asynchronous Rows in OBIEE but you need to use a CASE statement and that is much more time consuming that what you can achieve in Hyperion Reports.



COLLABORATE12

TECHNOLOGY AND APPLICATIONS FORUM
FOR THE ORACLE COMMUNITY

Financial Reporting



Gen1,Entities

	Q1			Q2			Q3			Q4		
Gen5,Segments	Gross Revenue	Headcount	Revenue per Head	Gross Revenue	Headcount	Revenue per Head	Gross Revenue	Headcount	Revenue per Head	Gross Revenue	Headcount	Revenue per Head
Audio Systems	85,138,066	846	100,636	85,943,196	858	100,128	112,258,633	879	127,760	94,638,646	913	103,657
Digital Video	65,216,590	908	71,824	66,425,762	914	72,649	68,298,030	917	74,507	72,637,255	923	78,697
Installation	75,721,270	310	244,262	26,406,720	311	84,909	52,813,440	311	169,818	110,908,224	311	356,618
Repair	8,660,005	210	41,173	59,400,951	211	281,521	35,880,354	211	170,049	82,463,779	211	390,824
Service Contracts	31,146,020	289	107,772	32,634,991	289	112,924	42,833,426	289	148,213	97,904,974	290	337,992
Televisions	53,153,515	595	89,334	55,694,581	600	92,773	73,099,137	603	121,226	83,541,871	604	138,391
VCRs	61,994,136	434	142,953	58,498,139	435	134,376	58,304,652	438	133,116	57,257,869	439	130,428

Not as flexible as Hyperion Reports

OBIEE is a SQL query tool and it is designed to bring back SQL grids. The grid above is nice and informative, but it's not ready to present to senior management and even putting it in BI Publisher won't get it completely ready.



COLLABORATE12
TECHNOLOGY AND APPLICATIONS FORUM
FOR THE ORACLE COMMUNITY

Essbase Querying OBIEE



Essbase on top of OBIEE (rpd as data source)

- Works Like EIS
- Essbase Schema becomes somewhat inflexible
 - Certain Changes can be problematic
- All in all it works pretty well



COLLABORATE12

TECHNOLOGY AND APPLICATIONS FORUM
FOR THE ORACLE COMMUNITY

Some Issues



- Lack of ability to do Asynchronous Rows
 - If you are an organization that needs Cost Center or Cost Type and Accounts in the Rows to create a Financial Statement this can be an issue
- When using RPD as a data source for Essbase Studio you can't add a new member without rebuilding the entire schema
- When using Essbase Studio your model should be mature
 - Adding levels to a dimension entails full rework



COLLABORATE12

TECHNOLOGY AND APPLICATIONS FORUM
FOR THE ORACLE COMMUNITY

Customer Stories



Investment Bank

- Wanted Financial Dashboard
- Project Successful Overall
- End Result was a set of Dashboards that were highly scripted and static and launched users into Financial Reports for any type of ad hoc analysis on the web
- Lots of Scripting in OBIEE
- BI Publisher was determined not to be capable of handling needed reporting due to asynchronous row limitation

Mutual Fund

- Wanted OBIEE and BI Publisher
- Lots of problems with BI Publisher handling the relational data
- Changed course and decided to use OBIEE rpd as source for Essbase models
- Essbase Cubes built using Essbase Studio
- Essbase Cubes feed Financial Reports to deliver information



COLLABORATE12

TECHNOLOGY AND APPLICATIONS FORUM
FOR THE ORACLE COMMUNITY

What's coming



- OBIEE interface is getting major overhaul
 - Asynchronous row issue will be resolved by what Oracle is calling “Dimensional Columns”
 - OBIEE will handle Essbase more like Financial Reports does today
- “Custom Group – Results”
- Grid Navigation in what Answers calls a Pivot Table will be much like the Excel Add-in



COLLABORATE12

TECHNOLOGY AND APPLICATIONS FORUM
FOR THE ORACLE COMMUNITY

The New Answers



Answers Plus in OBIEE 11g

The Next Generation of Answers

- Multidimensional, OLAP Analysis
- OLAP-style query building with member selection
- Calculated Members
- Ragged and skip-level hierarchies
- Hierarchical Calculations
- Function extensibility
- Custom Aggregates
- Uniformly applies to dimensional (OLAP) and relational sources
- Optimized for Essbase

Supplier Sales

Pivot Table

View

2001

All Products

		Accessory Division	Audio Division	Video Division
		Sales	Costs	Sales
World	1,500	3,060	500	1020
Africa	300	600	100	200
Americas	300	660	100	285
Brazil	30	90	10	50
Canada	30	120	10	60
USA	150	300	50	100
Asia	300	600	100	200
Australia	300	600	100	200
Europe	300	600	100	200

Selections

Measures

Cost

Sales

New...

Geography - Standard

1. Start with: Everything

2. Keep Country: 'Sales > 30'

3. Remove: 'Argentina', 'Mexico'

3. New...

Product - Standard

1. Start with: Everything

2. New...

Year

1. Start with: Everything

2. New...



COLLABORATE12

TECHNOLOGY AND APPLICATIONS FORUM
FOR THE ORACLE COMMUNITY

Dimensional Columns



Dimensional Columns

- New column type with unique capabilities
- Achieved by dragging and dropping hierarchy from Subject Area tree on to workspace
- Single column with expansion capabilities
- Asymmetrical Drilling
- "Drill Up"

Pivot Table

2001

All Products

Accessory Division

Audio Division

Video Division

Costs

Sales

Costs

Sales

Costs

Sales

Costs

Sales

World

Americas

Argentina

Brazil

Canada

Colombia

Mexico

USA

Asia

Australia

1,200

2,460

400

820

400

820

400

820

300

660

100

155

100

285

100

220

30

60

10

10

10

30

10

20

30

90

10

10

10

50

10

30

30

120

10

20

10

60

10

40

30

30

10

5

10

15

10

10

30

60

10

10

10

30

10

20

150

300

50

100

50

100

50

100

300

600

100

200

100

200

100

200

300

600

100

200

100

200

100

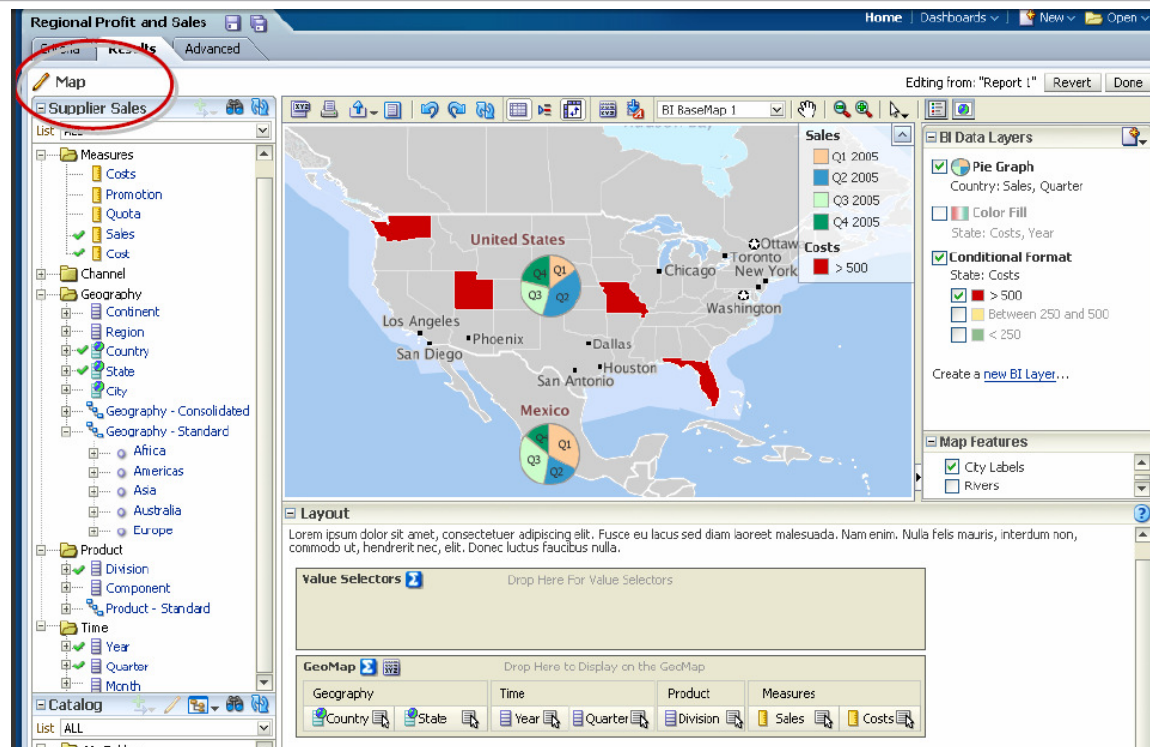
200



COLLABORATE12

TECHNOLOGY AND APPLICATIONS FORUM
FOR THE ORACLE COMMUNITY

Maps!!!!

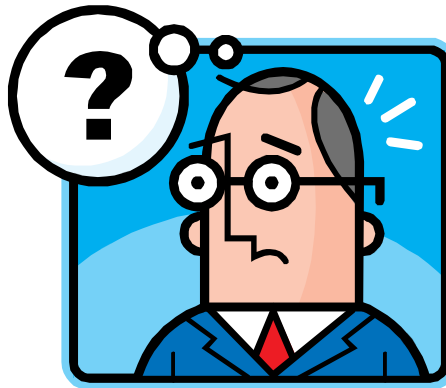




COLLABORATE12

TECHNOLOGY AND APPLICATIONS FORUM
FOR THE ORACLE COMMUNITY

Questions?



Contact Information

Email: aladd@mindstreamanalytics.com

Telephone: 917-579-0926



COLLABORATE12

TECHNOLOGY AND APPLICATIONS FORUM
FOR THE ORACLE COMMUNITY

Additional Info



For Screenshots of the new OBIEE

- Visit Debashi's OBIEE Blog at:
 - <http://debaatobiee.wordpress.com/2009/10/06/obiee-11g-a-gospel-about-whirlpool-in-bi-space/>