

Essbase Today



MINDSTREAM[®]
ANALYTICS



1.20.11

Alex Ladd

- OAUG Hyperion SIG Essbase Domain Lead
- 12 years of Planning/Essbase Experience
- 15 years of BI Experience
- Senior Partner - **MindStream Analytics**
- Devoted User of Essbase Excel Add-In

Contact Information

Email: aladd@mindstreamanalytics.com

Telephone: 917-579-0926

In March 2010 there were over 400 Essbase customers still using a version prior to 7.0.

- What are they using it for?
- Why don't they upgrade?
- Do they know about the improvements that have been made in the past 8 years?
- What are those improvements?

Today's Goals

- What are people using Essbase for today.
- What new features are people taking advantage of since Essbase 7
- The newest features in 11 and 11.1.2
 - This section will include examples
- Ancillary Tools Notes and updates
 - Add-in
 - Smart View – (I promise not to try and sell you on it)
- What's upcoming

Essbase – the Wikipedia version



Essbase is a multidimensional database management system (MDBMS) that provides a multidimensional database platform upon which to build analytic applications. Essbase, whose name derives from "Extended Spread Sheet dataBASE", began as a product of Arbor Software, which merged with Hyperion Software in 1998. Oracle Corporation acquired Hyperion Solutions Corporation in 2007, as of 2009 it markets Essbase as "Oracle Essbase". Until late 2005 IBM also marketed the product as DB2 OLAP Server.

Oracle Essbase

MINDSTREAM

When my Mom asked what I did I gave her this example and she told me to stop being a smart ass.

Essbase – my version



Essbase is an incredibly powerful analytic tool that relates data together via dimensions and allows you to perform in depth analysis by dragging, dropping, double right clicking and double left clicking inside Excel. Besides easy drag and drop it can do powerful calculations like this:

```
IF (@ISMBR ("Fin Class - Medicare - General"))  
1.35*(@POWER ((1+(NumIntRes:NumBeds)), .405)-1);  
ELSEIF (@ISMBR ("Fin Class - Medicare - HMO"))  
"Fin Class - Medicare - General"->"IME%";  
ENDIF;
```

It's ease of use is what turned me into a computer geek.

MINDSTREAM

So I made up this version for my mom. (And gave her a demo)



That's nice but what are people using it for?

Some Essbase Uses



- Allocation model to perform Customer, Channel, Supplier profitability
- Inventory analysis and automated re-ordering
- Project Staffing models
- Calculation of rebates based on volume contracts
- Analysis of Data Warehouse data
- Risk Analysis
- Insurance Reimbursement calculations
- Actuarial Calculations
- Driver based budget calculations (With Planning and Stand alone)

MINDSTREAM

Essbase Version 7.0 New Features



- ASO
 - Increased Essbase capability to handle more data, but not best option because there was no incremental update capability
- Introduction of MDX
- Administration Console
 - New look to App Manager but same functionality
- Create Blocks in Calc Scripts
 - SET CREATEBLOCKONEQ and SET CREATEONMISSINGBLK
- Trigger Functionality
- Unicode Support
- Data Mining Added

MINDSTREAM

MDX – MultiDimensional eXpressions

System 9 New Features

- ASO Restructuring
 - Not Necessary to dump all data and reload
- Export 0-Level Data from ASO
- BSO Support for Duplicate Member Names
- Extended use of Substitution Variables
 - Ability to use in; Member Formulas, Security filters, MDX statements, Partition Definitions, certain Rules Files locations
- Data Mining Enhancements
- **64 Bit**
 - First on Itanium Chips then on all 64 bit chips

MINDSTREAM

Most Additions in System 9 were things that would be useful to other applications like Planning, Workforce Planning, Capex Module or Profitability Cost Management

Essbase 11.1.1.3 New Features



- Lifecycle Manager Integration
- Typed Measures – Text and Dates
- Format Strings
- Varying Attributes
 - This was very big for retail customers tracking same store sales
- Backup & Restore Options
 - Introduced Transaction Logging which upgraded Essbase's IT readiness
- Clear Data from Specific Regions of ASO Databases
 - Big in the evolution of ASO
- Environment Variables accessible to BSO Calcs
- Batch insertion of data into Relational Databases from BSO
- Implied Share Override
 - Big development for Future looking applications – Planning applications
- Parallel SQL loads to ASO databases

MINDSTREAM

Version 11 was the first Oracle release and you can see in the Oracle releases much more concentration on what I would call true database functionalities, such as, Transaction Logs, Clustering etc.

Essbase 11.1.2 New Features

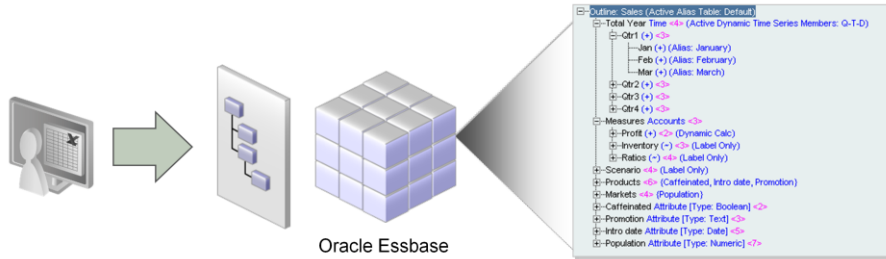


- HFM Analytic Link
- More Integrated Security
 - Good & Bad – Easier to set up, less flexibility
- Allocations on Aggregate Storage
- Custom Calculations on Aggregate Storage
- @XWRITE
 - Can be used to create blocks during calcs
 - Need Intelligent Calculator Off. (Update Calc Off)
- @RETURN
 - Can exit a calc script upon logical conditions
- Export Metadata to XML
- Clustering

MINDSTREAM

That's an impressive list of new features but
wasn't there a mention of examples?

Let's start with 11.1.1.3 examples



Typed Measures

- Similar to Planning Smart Lists
- Typed Measures store a value in Essbase that references a piece of Text in a Text List
- In order to use it you must enable it for the database



Enable “Typed Measures enabled” in the Outline Editor.

Typed Measures - Member Properties



Text Lists

Name	ID
Yes	#Missing
NA	#OutOfRange
No	1

Member Information

- Name: [Product Continuation Note](#)
- Two-Pass calculation: [false](#)
- Type: [Text](#)
 - Select Text List: [Continuation](#)
- Associate format string: [Click here to edit this field](#)
- Comment: [Click here to edit this field](#)
- Consolidation: [\(^\) Never](#)
- DataStorage: [Store Data](#)

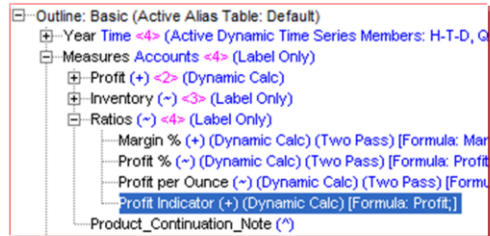
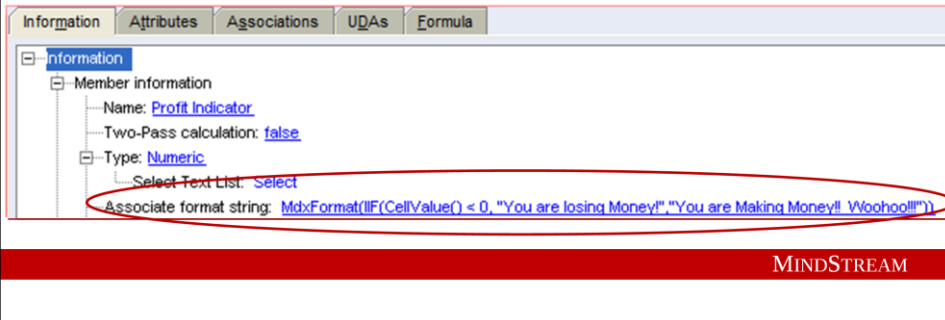
In the Outline Editor you need to build a Text List to relate a Text type measure to a value

Relate the Text Member to the Text List in the Member Properties Window

In this example I made a copy of Sample:Basic and changed the “Typed Measure” property of the Outline to “Enabled”. Then I added a Text List with a value of “Yes” for #Missing and a value of “No” for the value 1. #Missing and #OutOfRange mandatory in Text Lists. Then I added a member called “Product_Continuation_Note” as a sibling of “Ratios” This will show that the Product is going to be produced during that time period within that Market for that Scenario unless someone loads a 1 to the database to “Shut Off Production”.

Format Strings

- Allow the application to pre-format cells during retrieval
 - This is not storing formatted data in the database! Instead it is applying the formatting upon retrieval
 - Can be used for Textual Traffic Lighting

Information | Attributes | Associations | UDAs | Formula

Information

- Member information
 - Name: Profit Indicator
 - Two-Pass calculation: false
 - Type: Numeric
 - Select Text List: Select
 - Associate format string: `MdxFormat(IIF(CellValue() < 0, "You are losing Money!", "You are Making Money!! Woohoo!!!"))`

MINDSTREAM

Added a dynamically calculated member to Sample:Basic called Profit Indicator and had a member formula to reference the amount of Profit. Then added: `MdxFormat(IIF(CellValue() < 0), "You are losing Money!", "You are Making Money!! Woohoo!!!"))` to format the cell with a message for the user.

Format Strings – The Result!



	A	B
0		Actual
1		Qtr1
2	Margin	94.0
3	Total Expenses	149.0
4	Profit	-55.0
5	Inventory	#MISSING
6	Margin %	23.383084577114428
7	Profit %	-13.68%
8	Profit per Ounce	#MISSING
9	Profit Indicator	You are losing Money!
10	Ratios	23.383084577114428
11	Product_Continuation_Note	Yes

- Not many Good references on this
 - Look in Technical Reference and search on “MdxFormat” then choose CellValue

MINDSTREAM

Profit % is another Format String member and it illustrates that you can utilize this functionality to format the data as well as create messaging. One word of caution about formatting data this way is that the data would be formatted at each member level within Essbase and that would make administration of all the members difficult.

Varying Attributes

- Gives the user the ability to track things by Attribute groupings as they change over time or Perspective.
 - For instance, many retail customers would like to monitor sales changes in stores open longer than 12 months versus stores open less than twelve months. Varying attributes allows them to calculate the correct value for Q3 2010 and Q4 2010 even though some stores changed categories or attributes

To Implement

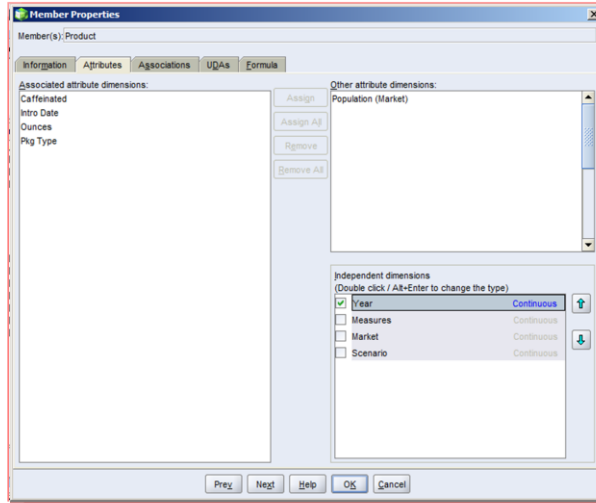
First, Enable Varying Attributes in the Outline



MINDSTREAM

This example would be perfect to analyze the effect sales or other promotions had on different products. Using Sample.Basic enable Varying attributes in the Properties section of the outline editor.

Varying Attributes



Then edit the member properties of the source dimension of the attribute and choose which dimensions are independent

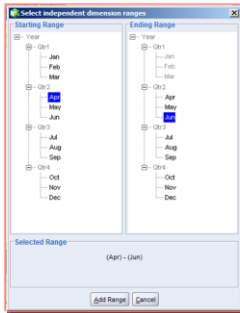
Two types of Independent Dimensions:

- Continuous
 - Example: Time
- Discreet
 - Example: Market

MINDSTREAM

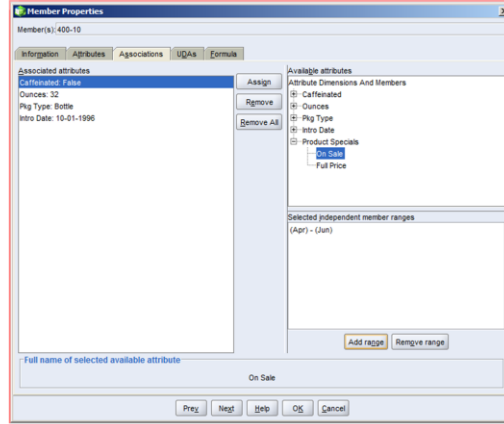
Then edit the member properties of the source dimension, in my example this is product. I set the Year as the independent dimension so different products can have promotions at different times of the year.

Varying Attributes



Add Range Dialog

Choose a base member to assign the varying attribute to and select the varying attribute. Once you have selected the varying attribute the "Add Range" button becomes active. Once you add a range you may assign the varying attribute.



MINDSTREAM

Then I added an Attribute dimension called "Product Specials" to Sample Basic and made it a vary attribute with the Independent dimension Year. Then I created two attributes and tagged them with different ranges on different products.

Transaction Logging

- Greatly enhances Essbase backup strategies and allows for roll forwards of transactions
- This is an example of Oracle making Hyperion software more "IT Ready"

Step 1 – Enable Logging


- Essbase.cfg setting:

```
TRANSACTIONLOGLOCATION [app name][db name] LogLocation NATIVE  
ENABLE|DISABLE
```

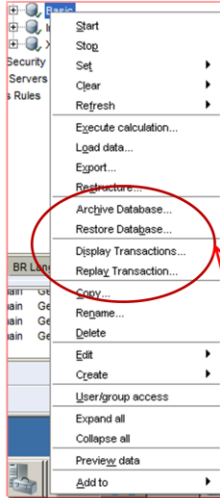
- My example
 - TRANSACTIONLOGLOCATION SampText
D:\esbTransactions\Logs NATIVE ENABLE
 - If you leave out the App Name it will take effect for the server

Transaction Logging is a great enhancement for applications that get a lot of read/write or have a lot of independent calculations that are user run. This way you can roll forward transactions after a given archive point.

Transaction Logging in EAS



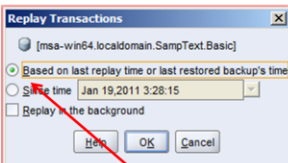
1.



Choose parameters to view different groups of transactions

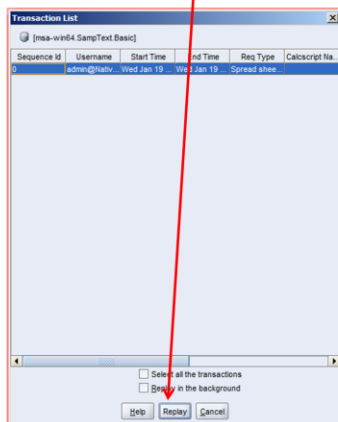
Archive & Restore Database, Display & Replay Transactions are accessed by right clicking Database


2.



3.

Transaction List allows replay of specific transactions or all transactions





In order to utilize the transaction roll forwards, you right click on the database name in EAS and choose “Display Transactions”. Then choose the parameters you’d like to filter the amount of transactions by. In my example I chose since the last replay time or last restored backup time. Then Essbase will show you all the transactions. You can replay them individually by clicking on each one or replay all.

Clear Specific Regions in ASO



- Continues to expand the ability of ASO to be more like BSO and more of an OLAP database than just a reporting tool.

alter database apname.dbname clear data in region {MDX set expression} [physical];

Cube View Properties									
	A	B	C	D	E	F	G	H	
0		Actual	Working	HSP_InputVa...	Local	FY03	Entities		
1		FRAG	FASH	ALEU	BLABS	REAL	ALLOC	NOBRAND	
2		TP9	TP9	TP9	TP9	TP9	TP9	TP9	
3	Gross Profit	4754802.950...	206658.05	#MISSING	#MISSING	#MISSING	-1045380.95	309632.0	
4	TOE	904263.9600...	174621.29	#MISSING	#MISSING	#MISSING	1746971.04	#MISSING	
5	Marketing Contribution	3850538.990...	32036.75999...	#MISSING	#MISSING	#MISSING	-2792351.99	309632.0	
6	CorpExpense	#MISSING	#MISSING	#MISSING	#MISSING	#MISSING	#MISSING	21451.41	
7	71400	45620.60999	#MISSING	#MISSING	#MISSING	#MISSING	#MISSING	90458.0	
8	71405	#MISSING	#MISSING	#MISSING	#MISSING	#MISSING	#MISSING	#MISSING	
9	71410	#MISSING	#MISSING	#MISSING	#MISSING	#MISSING	#MISSING	#MISSING	
10	71425	#MISSING	#MISSING	#MISSING	#MISSING	#MISSING	#MISSING	100021.27	

Let's try and write a statement to just clear account 71400 for TP9 for Actual scenario, local currency, Working version, Fiscal Year 03 all Entities and all the Brands under FRAG.

MINDSTREAM

In this example we want to clear the data from the descendants of FRAG for all 0-level entities for Actual->Working->HSP_InputValue->Local->FY03->TP9 for Account 71400.

Clear Data in ASO – Results!



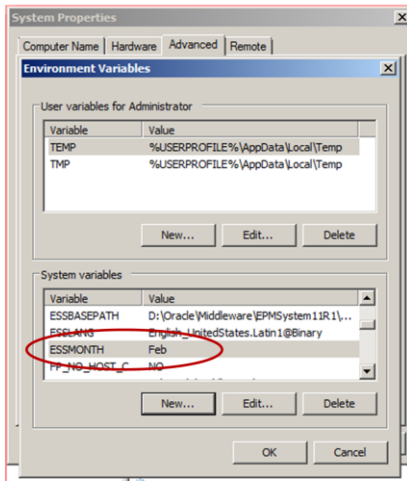
```
MaxL Script Editor -PuigASO_ClearData [msa-win64]
Agency FB

alter database 'PuigASO';PuigASO' clear data in region "Crossjoin([FY03],
Crossjoin([TP9]), Crossjoin([HSP_InputValue]), Crossjoin([Working]),
Crossjoin([Local]), Crossjoin([Actual]), Crossjoin([71400]),
Crossjoin(Descendants([Frag], [Brands] levels(0)),
Descendants([Entities],[Entities] levels(0))))))";
physical;
```

	A	B	C	D	E	F	G	H
0		Actual	Working	HSP_InputVa...	Local	FY03	Entities	
1		FRAG	FASH	ALEU	BLABS	REAL	ALLOC	NOBRAND
2		TP9	TP9	TP9	TP9	TP9	TP9	TP9
3	Gross Profit	4754802.950...	206658.05	#MISSING	#MISSING	#MISSING	-1045380.95	309632.0
4	TOE	904263.9600...	174621.29	#MISSING	#MISSING	#MISSING	1746971.04	#MISSING
5	Marketing Contribution	3850538.990...	32036.75999...	#MISSING	#MISSING	#MISSING	-2792351.99	309632.0
6	ConfVest	#MISSING	#MISSING	#MISSING	#MISSING	#MISSING	#MISSING	21451.41
7	71400	#MISSING	#MISSING	#MISSING	#MISSING	#MISSING	#MISSING	90458.0
8	71405	#MISSING	#MISSING	#MISSING	#MISSING	#MISSING	#MISSING	#MISSING
9	71410	#MISSING	#MISSING	#MISSING	#MISSING	#MISSING	#MISSING	100021.27

MINDSTREAM

Environment Variables in Calcs



- Only available to BSO

```
Script
/ESS_LOCALE English_UnitedStates.Latin1@Binary
CLEARDATA "Actual" -> $ESSMONTH;
```

For an example of the Environment Variable being used in a Calc script I created an Environment Variable called "ESSMONTH" on my server and gave it a value of "Feb".

Environment Variables in Calcs – Results!

Before

Cube View		Properties		
		A	B	C
0		Actual	Product	Market
1		Jan	Feb	Mar
2	Margin	50.0	28.0	16.0
3	Total Expenses	52.0	55.0	57.0
4	Profit	-2.0	-27.0	-41.0

After

Cube View		Properties		
		A	B	C
0		Actual	Product	Market
1		Jan	Feb	Mar
2	Margin	50.0	#MISSING	16.0
3	Total Expenses	52.0	#MISSING	57.0
4	Profit	-2.0	#MISSING	-41.0

Batch Insertion to Relational DBs



- Essbase.cfg setting
 - DATAEXPORTENABLEBATCHINSERT
- Determines whether or not Essbase is able to utilize database 'batch insertion' instead of 'row by row' insertion.
 - Useful for Planning applications when the plan or forecast is being fed back into a data warehouse or GL system

MINDSTREAM

Implied Share Override

- Essbase.cfg setting
 - IMPLIED_SHARE [app name] TRUE|FALSE
- Two API Functions are available for this setting as well:
 - EssOtIGetImpliedShare and EssOtISetImplied Share

```

Essbase config settings (essbase.cfg)
-----
SERVERPORT 33766
AGENTDESC hypservice

CLEARLOGFILE FALSE
NETRETRYCOUNT 1000
NETDELAY 800
CALCCACHE TRUE
CALCCACHEDEFAULT 5000000
CALCCACHEHIGH 199999999
CALCLOCKBLOCKHIGH 500
CALCLOCKBLOCKDEFAULT 500
CALCLOCKBLOCKLOW 200

SERVERTHREADS 40
AGENTTHREADS 10

IMPLIED_SHARE INC_Plan FALSE
  
```

Outline: IncStmt (Active Alias Table: Default)

- Account Accounts <5> (Never Share)
 - INCOME_STATEMENT (+) <3> (Label Only) (UDAS: Revenue, Flow)
 - INCOME_SUMM (+) <1> (Dynamic Calc) (UDAS: Revenue, Flow)
 - INCOME_SUMMA (+) <1> (Dynamic Calc) (UDAS: Revenue, Flow)
 - INCOME_SUMMAR (+) <1> (Dynamic Calc) (UDAS: Revenue, Flow)
 - INCOME_SUMMARY (+) <1> (UDAS: Revenue, Flow)
 - AC6999990 (+) (Alias: Income Summary (AC6999990)) (UDAS: Revenue, Flow)

Implied Share Override



Data Preview Grid [msa-win64.localdomain:ING_Plan, IncStnt]

	A	B	C	D	E	F
0		Value	FY09	Actual	1st Pass	BU30040
1		Feb	Mar			
2	AC89999990	#MISSNG	#MISSNG	#MISSNG		
3	INCOME_SUMMARY	#MISSNG	#MISSNG	#MISSNG		
4	INCOME_SUMMAR	#MISSNG	#MISSNG	#MISSNG		
5	INCOME_SUMMA	#MISSNG	#MISSNG	#MISSNG		
6	TOTAL_EXPENSE	#MISSNG	#MISSNG	#MISSNG		
7	TOTAL_REVENUE	#MISSNG	#MISSNG	#MISSNG		
8	DataCafe Management	#MISSNG	#MISSNG	#MISSNG		
9	Expense Management	#MISSNG	#MISSNG	#MISSNG		
10	STAT_ACCOUNT	#MISSNG	#MISSNG	#MISSNG		
11	RATES_AND_DRIVERS	#MISSNG	#MISSNG	#MISSNG		

Before and after lock and send to 0-Level member shows data is retained and therefore implied share suppression works

Data Preview Grid [msa-win64.localdomain:ING_Plan, IncStnt]

	A	B	C	D	E	F
0		Value	FY09	Actual	1st Pass	BU30040
1		Feb	Mar			
2	AC89999990	50000.0	#MISSNG	#MISSNG		
3	INCOME_SUMMARY	#MISSNG	#MISSNG	#MISSNG		
4	INCOME_SUMMAR	#MISSNG	#MISSNG	#MISSNG		
5	INCOME_SUMMA	#MISSNG	#MISSNG	#MISSNG		
6	TOTAL_EXPENSE	#MISSNG	#MISSNG	#MISSNG		
7	TOTAL_REVENUE	#MISSNG	#MISSNG	#MISSNG		
8	DataCafe Management	#MISSNG	#MISSNG	#MISSNG		
9	Expense Management	#MISSNG	#MISSNG	#MISSNG		
10	STAT_ACCOUNT	#MISSNG	#MISSNG	#MISSNG		
11	RATES_AND_DRIVERS	#MISSNG	#MISSNG	#MISSNG		

MINDSTREAM

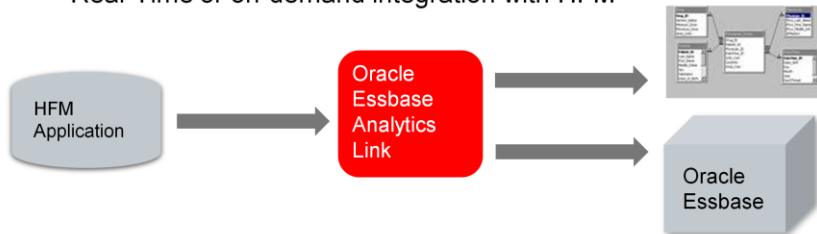
On with the Really new stuff!
11.1.2 examples

Essbase Analytics Link for HFM

Powerful Analytics on Consolidated Data



- Delivers Essbase analytics on live HFM data
 - Extend the data model
 - Integrate additional data sources
- Fulfill analytic needs with no impact on consolidation server
 - More users, more reports, bigger queries
 - Fast reporting performance
- Simple and automated implementation
 - Real-Time or on-demand integration with HFM



MINDSTREAM

ASO Allocations - Example

- Two options to utilize this function
 - Calc Manager
 - Calc Manager uses @MDALLOCATE
 - MaxL
 - Example Below

Cube View Properties

	A	B	C	D	E	F	G
0		Working	HSP_inputVa...	FY03	Actual	Local	PuigUSA
1		FRAG	NOBRAND	Brands			
2		TP9	TP9	TP9			
3	Gross Profit	2776968.071	-64333.5	2658154.451			
4	TOE	715287.6799...	#MISSING	1683939.509...			
5	Marketing Contribution	2061680.391	-64333.5	974214.9410...			
6	CorpExecT&E	#MISSING	21451.41	21451.41			
7	71400	#MISSING	45620.61	45620.61			
8	71405	#MISSING	#MISSING	#MISSING			
9	71410	#MISSING	36656.41	36656.41			
10	71425	#MISSING	#MISSING	#MISSING			

ASO Allocations - Example

- Allocate Account 71400 across FRAG Brands from NOBRAND
- We use amount of "[([NOBRAND],[71400])]" which equates to "NOBRAND"->"71400"; in BSO

```
MaxL Script Editor -PuigAllocateExample [msa-win64.localdomain]
Agency FB

execute allocation process on database PuigASO PuigASO with
pov "Crossjoin([FY03]),
      Crossjoin([TP9]), Crossjoin([HSP_InputValue]), Crossjoin([Working]),
      Crossjoin([Local]), Crossjoin([Actual]),
      Descendants([Entities][Entities].levels(0)))))"
amount "[([NOBRAND],[71400])]"
target "[71400]"
range "Descendants([FRAG],[Brands].levels(0))"
basis "[[Gross Profit]]"
share;
```

	A	B	C	D	E	F	G
0		Working	HSP_InputVa...	FY03	Actual	Local	PuigUSA
1		FRAG	NOBRAND	Brands			
2		TP9	TP9	TP9			
3	Gross Profit	2776968.071	-64333.5	2658154.451			
4	TOE	715287.6799...	#MISSING	1683939.509...			
5	Marketing Contribution	2061680.391	-64333.5	974214.9410...			
6	CorpExecTOE	#MISSING	21451.41	21451.41			
7	71400	45620.60999...	45620.61	94321.22			
8	71405	#MISSING	#MISSING	#MISSING			
9	71410	#MISSING	36656.41	36656.41			

Drawback is that ASO needs a specific Target and functions like @ATTRIBUTE or @UDA are not supported.

Custom ASO Calcs - Example



- Done via MaxL with custom calculation file

	A	B	C	D	E	F	G	H	I	J
1		HSP_InputValue	FY03	Actual	Working	Local	c			
2		HERRERA	RABANNE	PUIG	RICCI	PRADA	PAYOT	COMMEDG	OthNonPuig	FRAG
3		TP9	TP9	TP9	TP9	TP9	TP9	TP9	TP9	TP9
4	Net Sales	1,424,378.90	235,429.80	35,241.00	567,223.90	168,884.08	24,419.25	#Missing	#Missing	2,455,576.93
5	chg.prov.sales.ret	#Missing	#Missing	#Missing	#Missing	#Missing	#Missing	#Missing	#Missing	#Missing
6	Royalty Income	#Missing	#Missing	#Missing	#Missing	#Missing	#Missing	#Missing	#Missing	#Missing
7	42500	#Missing	#Missing	#Missing	#Missing	#Missing	#Missing	#Missing	#Missing	#Missing
8	42528	#Missing	#Missing	#Missing	#Missing	#Missing	#Missing	#Missing	#Missing	#Missing
9	42501	#Missing	#Missing	#Missing	#Missing	#Missing	#Missing	#Missing	#Missing	#Missing
10	Sales Rebates	#Missing	#Missing	#Missing	#Missing	#Missing	#Missing	#Missing	#Missing	#Missing
11	Exch.Dif.Sales	#Missing	#Missing	#Missing	#Missing	#Missing	#Missing	#Missing	#Missing	#Missing
12	Net Revenues	1,424,378.90	235,429.80	35,241.00	567,223.90	168,884.08	24,419.25	#Missing	#Missing	2,455,576.93
13	COS	793.24	#Missing	#Missing	#Missing	256,170.62	#Missing	#Missing	#Missing	256,963.86
14	Gross Profit	1,423,585.66	235,429.80	35,241.00	567,223.90	(87,286.54)	24,419.25	#Missing	#Missing	2,198,613.07

Object is to calculate Sales Rebates in account 42500 of 5% of Net Sales
Start with calculation file definition:

SalesRebates.txt Document3 * Document2 * Document1 *
 (([42500]) := ([Net.Sales]) * .05;

MINDSTREAM

Custom ASO Calcs - Example



SourceRegion is everything on the right hand side of your calculations in the calc file

```
MaxL Script Editor -Puig_SalesRebates [msa-win64]
Agency FB | msa-win64

execute calculation on database PuigASO.PuigASO with
local script_file "D:\Client\Puig\SalesRebates.txt"
pov "Crossjoin([FY03]), Crossjoin([TP9]), Crossjoin([HSP_InputValue]), Crossjoin([Working]),
Crossjoin([Local]), Crossjoin([Actual]), Crossjoin(Descendants(Frag], [Brands] levels(0)),
Descendants([Entities] levels(0))))))"
SourceRegion "[([Net Sales])";
```

SalesRebates.txt Document3 * Document2 * Document1 *

```
(([42500]) := ([Net Sales]) * .05;
```

	A	B	C	D	E	F	G	H	I	J
1		HSP_InputValue	FY03	Actual	Working	Local	c			
2		HERRERA	RABANNE	PUIG	RICCI	PRADA	PAYOT	COMMEDG	OthNonPuig	FRAG
3		TP9	TP9	TP9	TP9	TP9	TP9	TP9	TP9	TP9
4	Net Sales	1,424,378.90	235,429.80	35,241.00	567,223.90	168,884.08	24,419.25	#Missing	#Missing	2,455,576.93
5	chg.prov.sales.ret	#Missing	#Missing	#Missing	#Missing	#Missing	#Missing	#Missing	#Missing	#Missing
6	Royalty Income	#Missing	#Missing	#Missing	#Missing	#Missing	#Missing	#Missing	#Missing	#Missing
7	42500	71,218.95	11,771.49	1,762.05	28,361.20	8,444.20	1,220.96	#Missing	#Missing	122,778.85
8	42528	#Missing	#Missing	#Missing	#Missing	#Missing	#Missing	#Missing	#Missing	#Missing
9	42501	#Missing	#Missing	#Missing	#Missing	#Missing	#Missing	#Missing	#Missing	#Missing
10	Sales Rebates	71,218.95	11,771.49	1,762.05	28,361.20	8,444.20	1,220.96	#Missing	#Missing	122,778.85
11	Exch.Dif.Sales	#Missing	#Missing	#Missing	#Missing	#Missing	#Missing	#Missing	#Missing	#Missing
12	Net Revenues	1,353,159.96	223,658.31	33,478.95	538,862.71	160,439.88	23,198.29	#Missing	#Missing	2,332,798.08
13	COS	793.24	#Missing	#Missing	#Missing	256,170.62	#Missing	#Missing	#Missing	256,963.86
14	Gross Profit	1,352,366.72	223,658.31	33,478.95	538,862.71	(95,730.74)	23,198.29	#Missing	#Missing	2,075,834.22

MINDSTREAM

@Xwrite - Example

- Used to send data from one Essbase Database to another
 - Very useful for Planning applications that have workflows in multiple databases

/ESS_LOCALE English_UnitedStates.Latin1 @Binary

Name: Drivers

Purpose: To feed the IncStmt database the drivers it needs from this Volume database. It has been determined through testing this method creates the least amount of extra blocks and performs the fastest while creating blocks for us.

Created: 09/14/2010

Author: Alex Ladd

**/*

SET UPDATECALC OFF;

FIX ("Actual","Curr","No Entity")

Fix("Channel","PR_EO")

/ Gross New EO Accounts Driver */*

"MTD Count Gross Deposit Accounts" (

@XWRITE("MTD Count Gross Deposit Accounts",_RevCube_, "Value",Gross Account EO);

)

BEWARE - The Intelligent Calculator essentially shuts off this function

- Turn UpdateCalc OFF

Ancillary Tools – Some Notes



- 64 bit version of 11.1.2 Spread Sheet Add-in will not install if you have other Hyperion components installed.
 - Resolution is to download the 32 bit version of the Spread Sheet Add-in and install that.
- Smart View is going to Beta this year with the version Oracle claims will give complete parity with the Spread Sheet Add-in

MINDSTREAM

Oracle Essbase Roadmap

Oracle Essbase 11.1.3

- Full integration with BI Foundation installation
- Oracle Business Intelligence Essbase Integrator
- Fusion Middleware Integration
- Active-Active high availability clustering
- User-defined objects
- ASO calc extensions
- Storage optimization
- Metadata integration
- Fast-restructure of ASO outline changes
- BSO restructure performance improvements
- Parallel-calc performance improvements
- Enterprise Manager replace EAS admin functionality
- Unify capabilities in Studio and EAS
- Essbase as a Studio Source

Questions



Contact Information

Email: aladd@mindstreamanalytics.com

Telephone: 917-579-0926



MINDSTREAM